



24V

UNDER CABINET

NEON STRIP LIGHT



CONTENTS

01	Disclaimer	05	Connection
01	Warranty	05	Installation
02	Warning	06	Cutting Instruction
03	Parameters	07	Powering Instruction
04	Accessories	08	Splicing Instruction



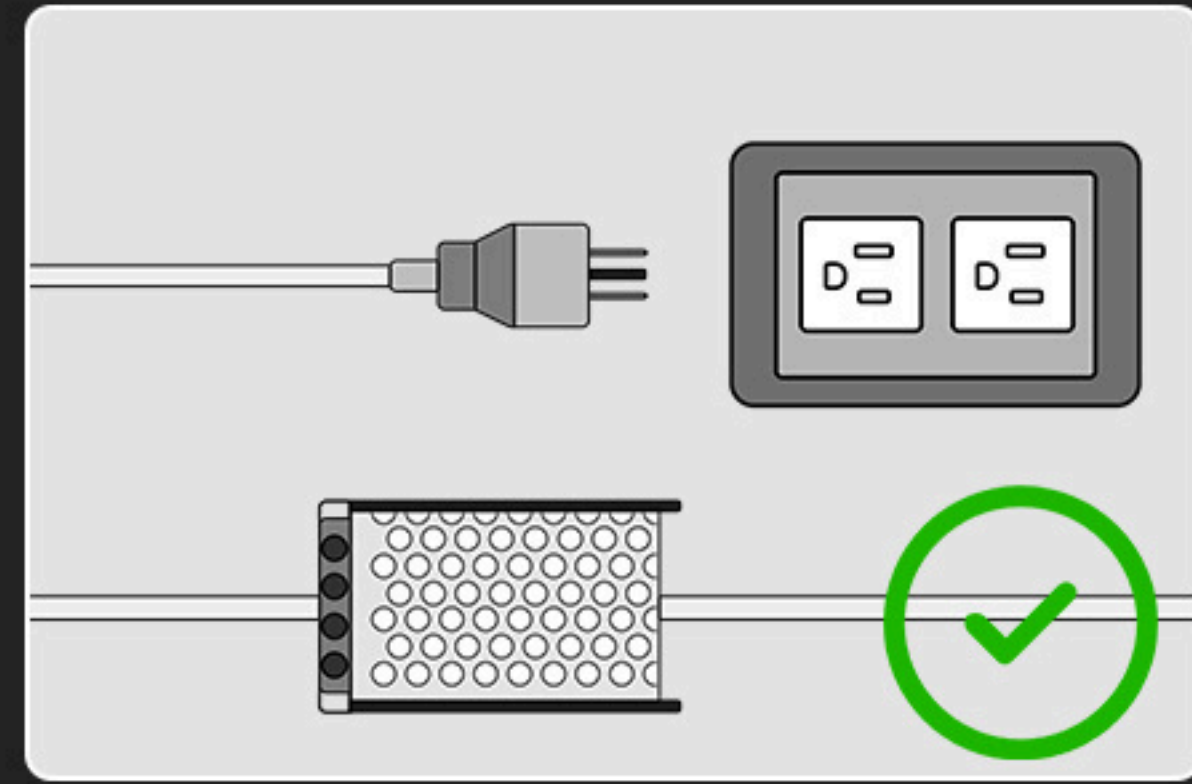
DISCLAIMER

Dear customer, these instructions are suggested installation procedures only, they do not constitute professional installation and may not necessarily meet all electrical requirements in your state. Please be reminded that our products covered by our UL report are not intended to be field cutting or splicing. We assume no liabilities occur from improper installation including incorrect cutting, splicing and damaged waterproof insulation etc.

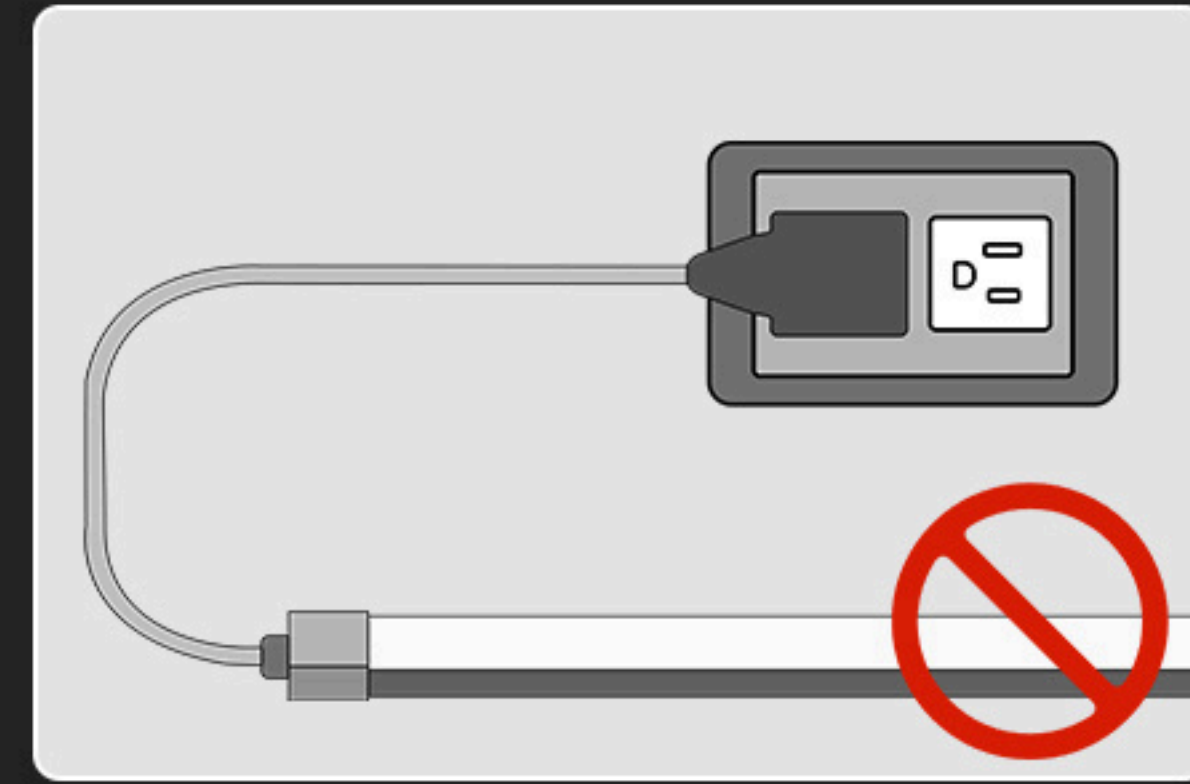
WARRANTY

All of our products are warranted against defects in materials and workmanship for a period of one year from the date of original purchase. We provide 1 month hassle-free full refund, 6 months money back or free replacement and 12 months limited warranty.

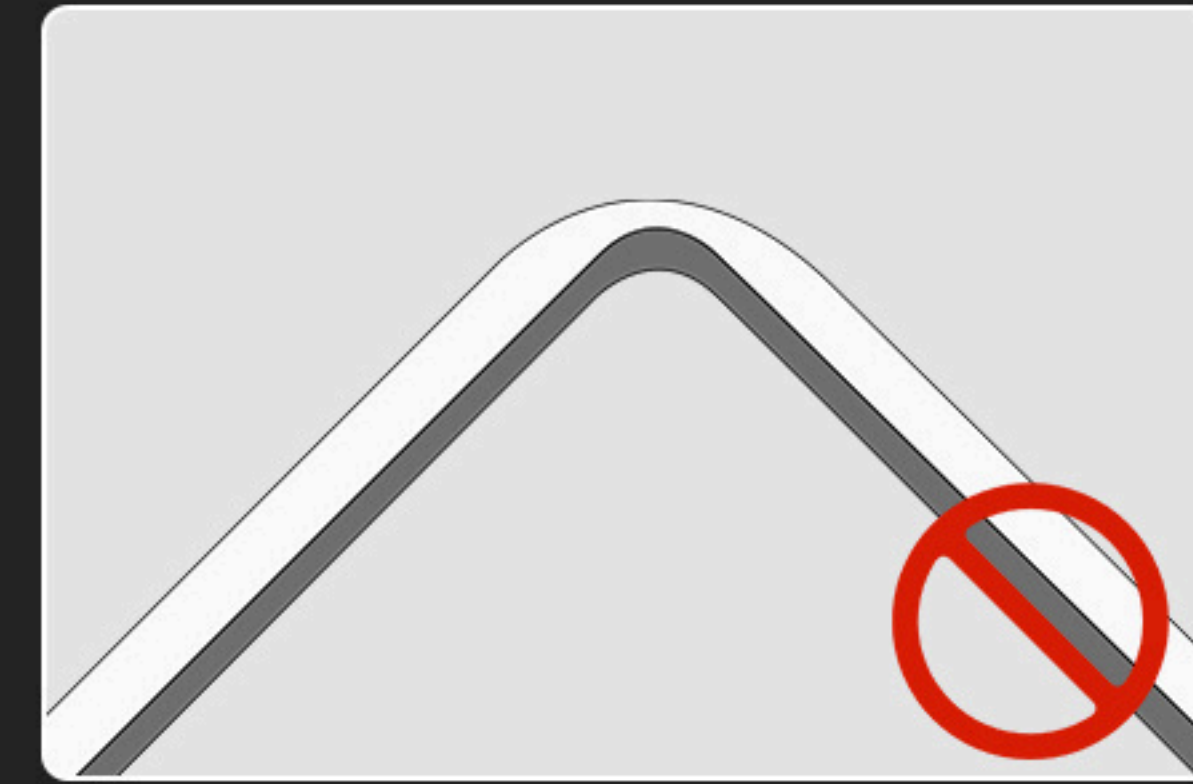
WARNING



1. The voltage of the neon strip is 24VDC and cannot be directly connected to 120AC. Please use a suitable power supply. The power should be 20% higher than the total power of the lamp.



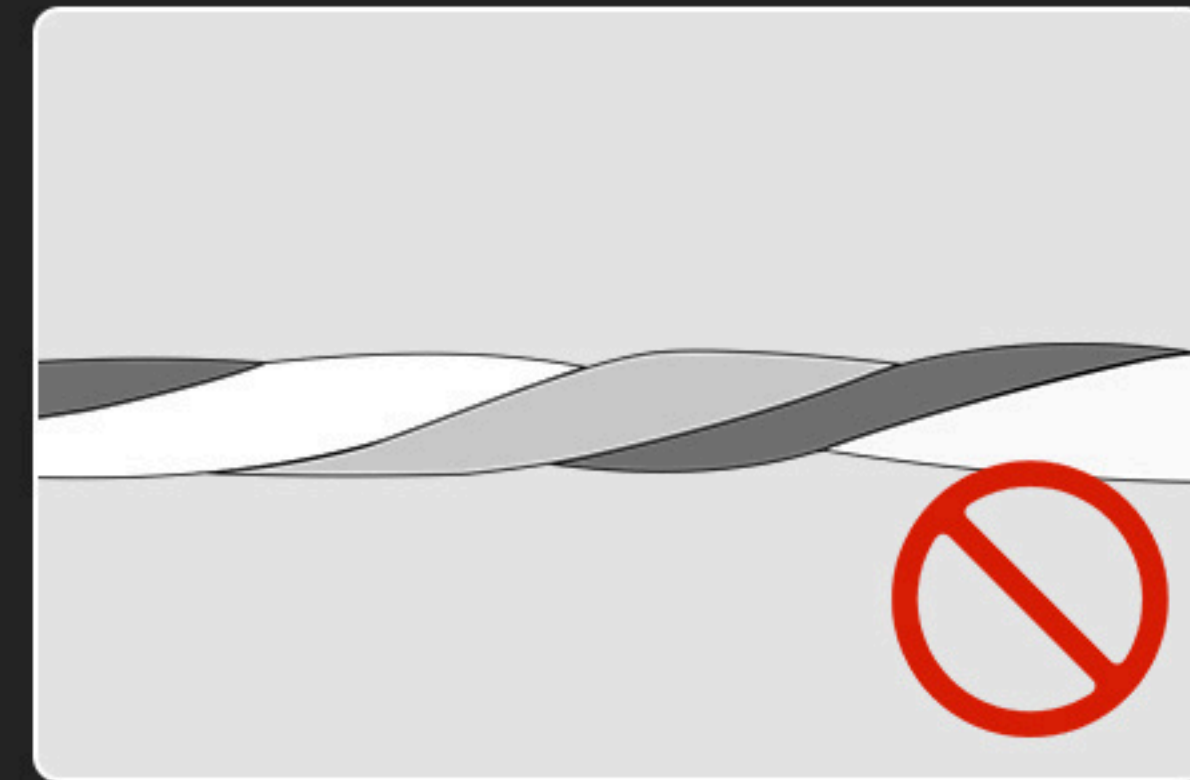
2. Do not install with power on. Before powering on, make sure the wiring is correct.



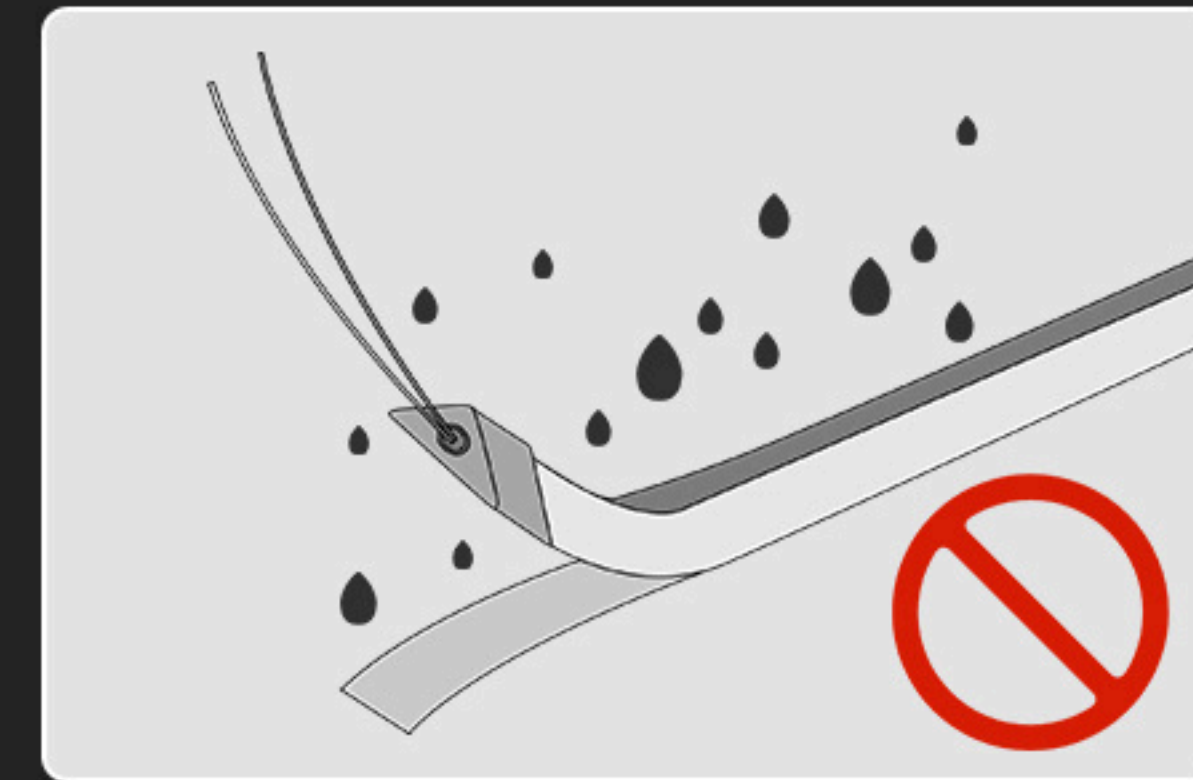
3. Avoid scratching, twisting and irregular bending during installation, which will cause the lamp to be irreparable.



4. The minimum bending diameter is defined as 100mm [3.94in]. Too small a bending diameter will damage the lamp.



5. The minimum twisting degree is 360° per 1000mm [39.4in].



6. IP54 for indoor usage.

GENERAL PARAMETERS

Dimension: W14.4*H6mm(W0.57*H0.24in)

Cutting Interval: Free-cutting (Two LED)

Max. Run length: 5M

LED Type: SMD 2216

LED QTY: 300 LEDS/M(91 LEDS/ft)

IP&IK Rating: IP54[Wet] & IK04

Operating Ambient: -20~45°C(-4~113°F)

Wire Gauge: 22 AWG

PHOTOELECTRIC PARAMETERS

Voltage: DC 24V

Power Consumption: 12W/M(3.66W/ft)

Color-CCT: 2700K/6000K

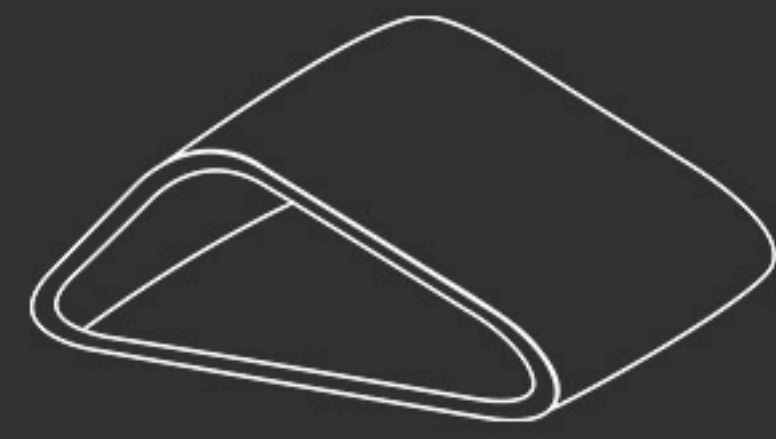
Brightness: 760lm/M±10%(232lm/ft)

Luminous Efficacy: 63lm/W

CRI: 90

Beam Angle: 120°

Accessories



1. End Cap **2**



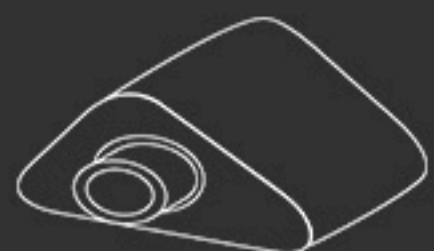
2. manual **1**

Front wiring kit

(Need to purchase additional)



Rigid Conductive Plate With Cable Power **1**



Front Cap **2**



End Cap **2**



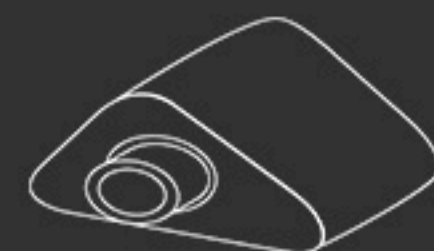
Glue **1**

Intermediate wiring accessories kit

(Need to purchase additional)



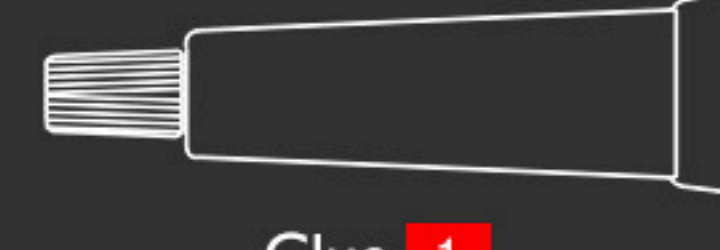
Rigid Conductive Plate With Cable Power **2**



Front Cap **4**



End Cap **4**



Glue **1**



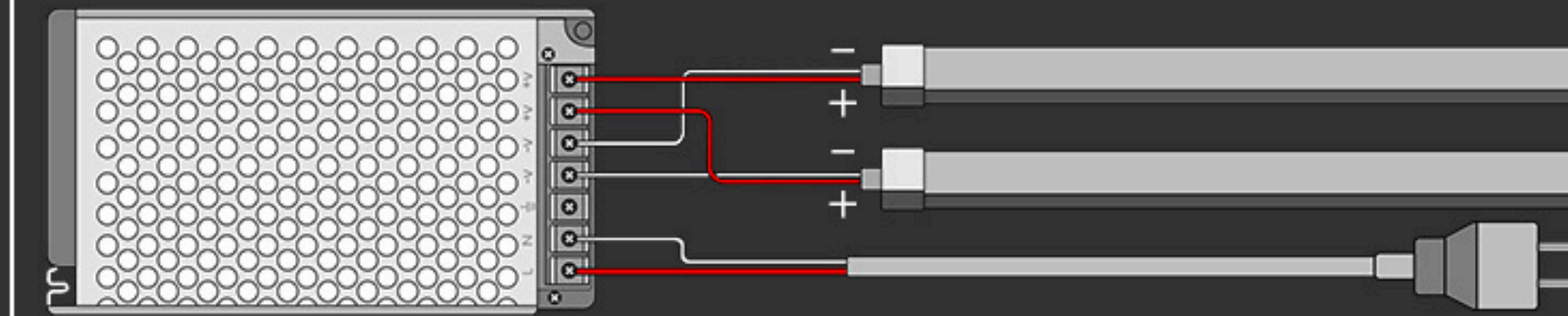
Terminals **1**

Connection

Note:

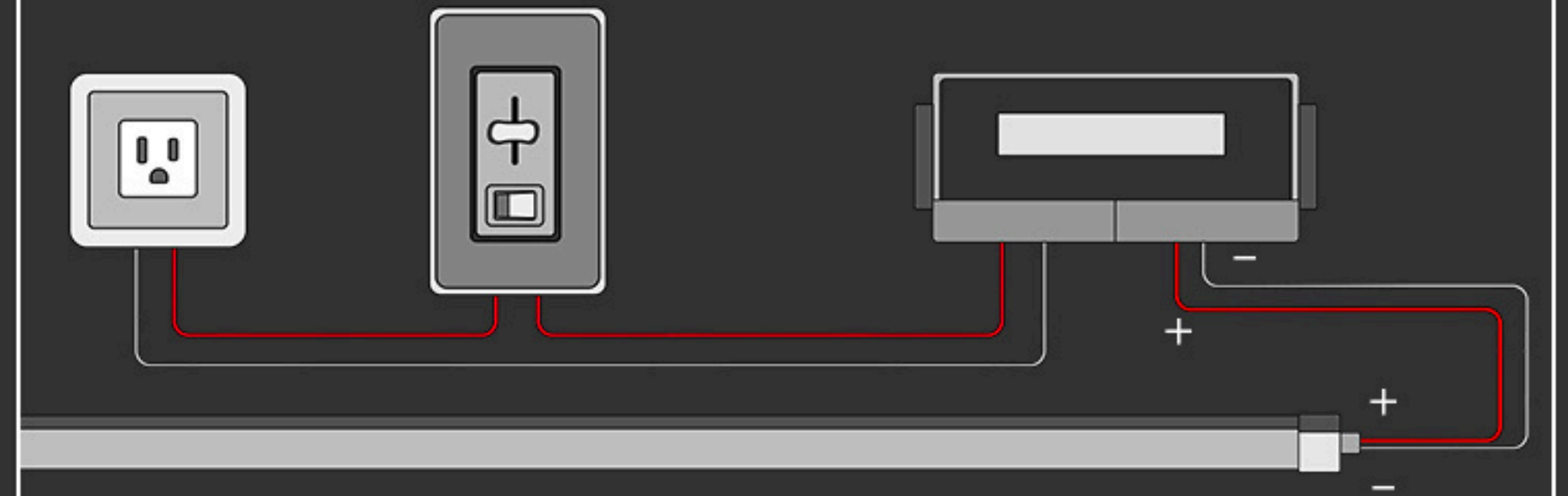
1. Do not connect and install with power on!
2. The light strip set does not include a power supply and a dimmer, please purchase them separately!
3. Use a suitable power supply. The power of the purchased power supply and dimmer should be 20% higher than the total power of the lamp to ensure the long-term performance of the power supply!

Non-dimming connection



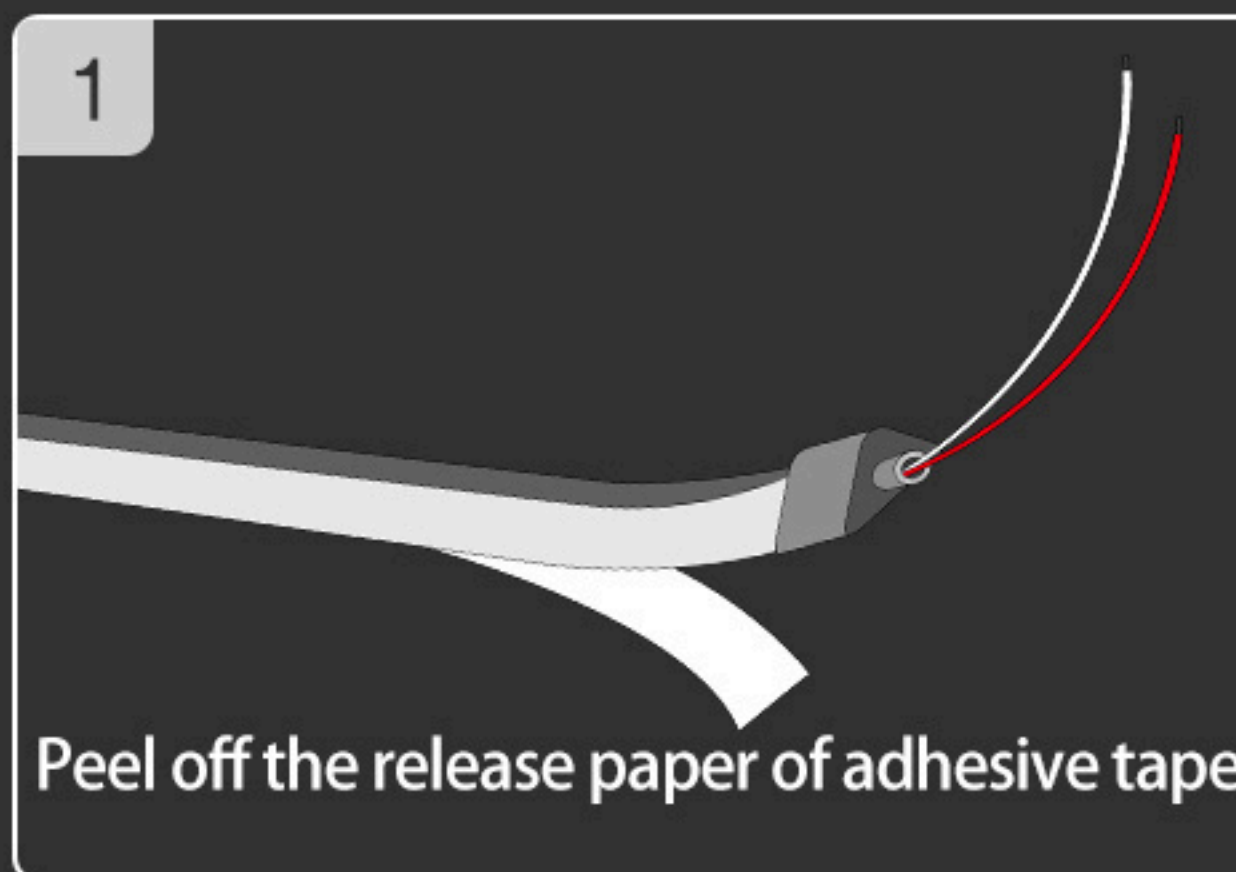
AC Input-Power Supply -DC Output-Neon Strip Light

Dimmable connection

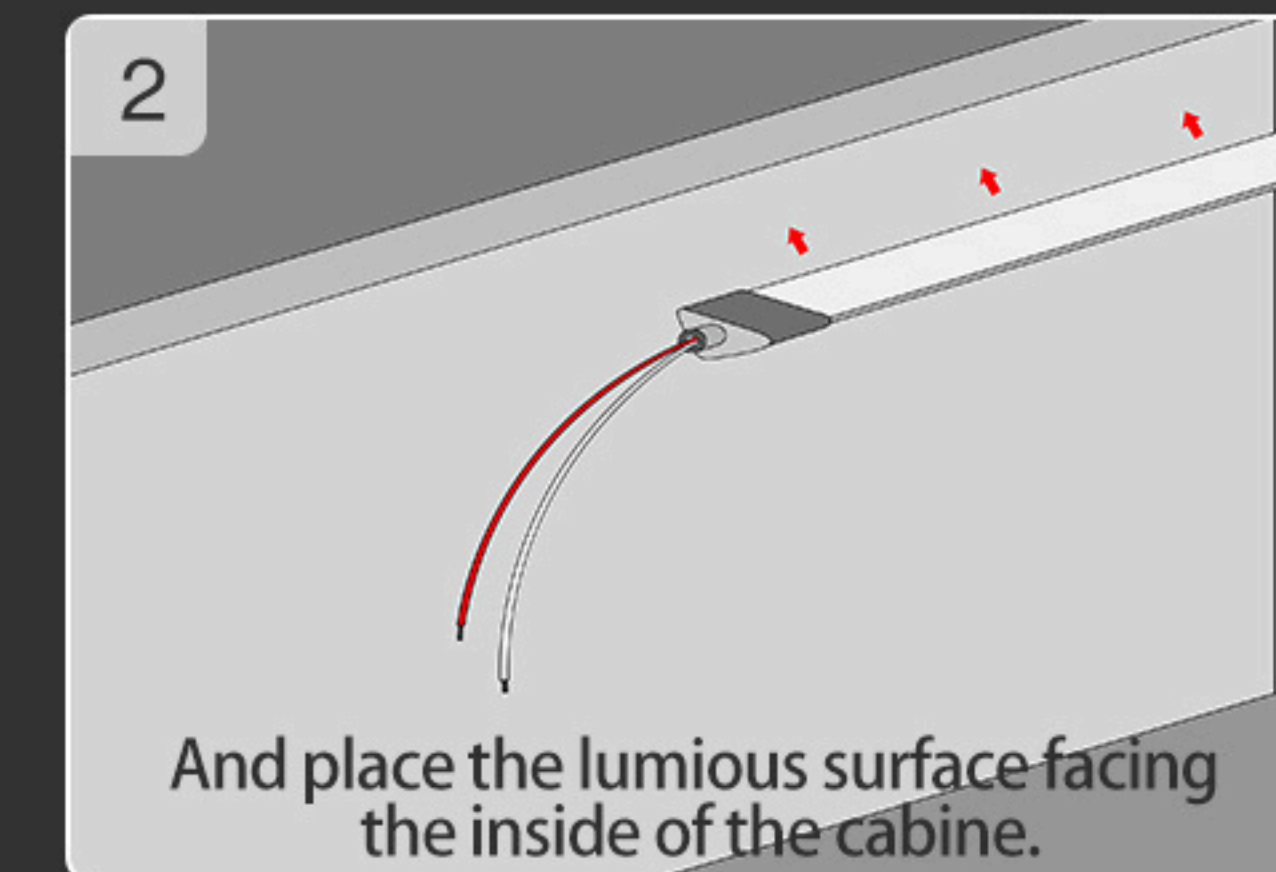


AC Power-AC Dimmer-Dimmable Driver- Neon Strip Light

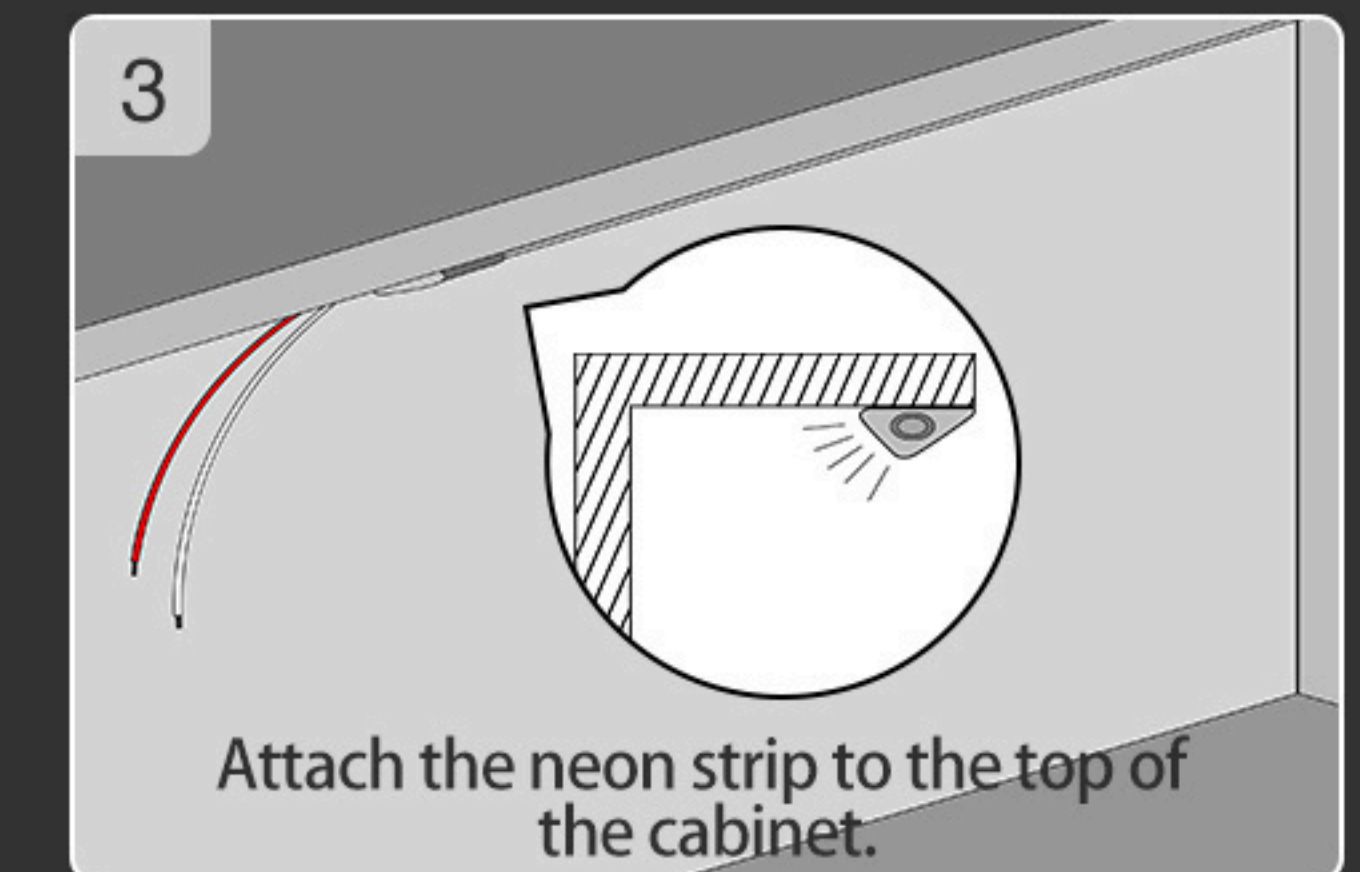
Installation



1 Peel off the release paper of adhesive tape.

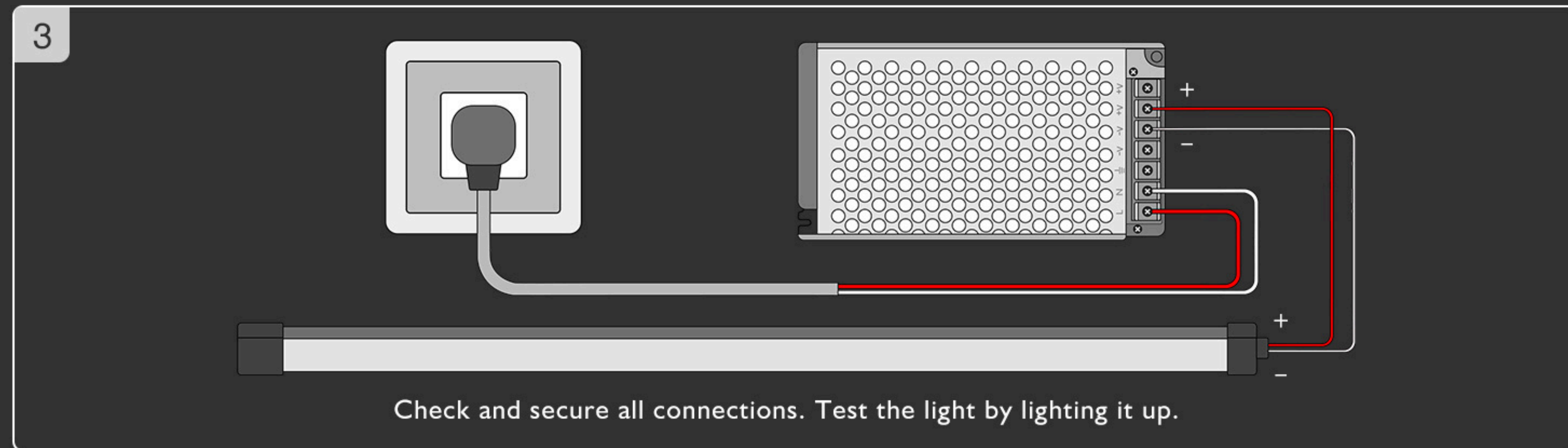
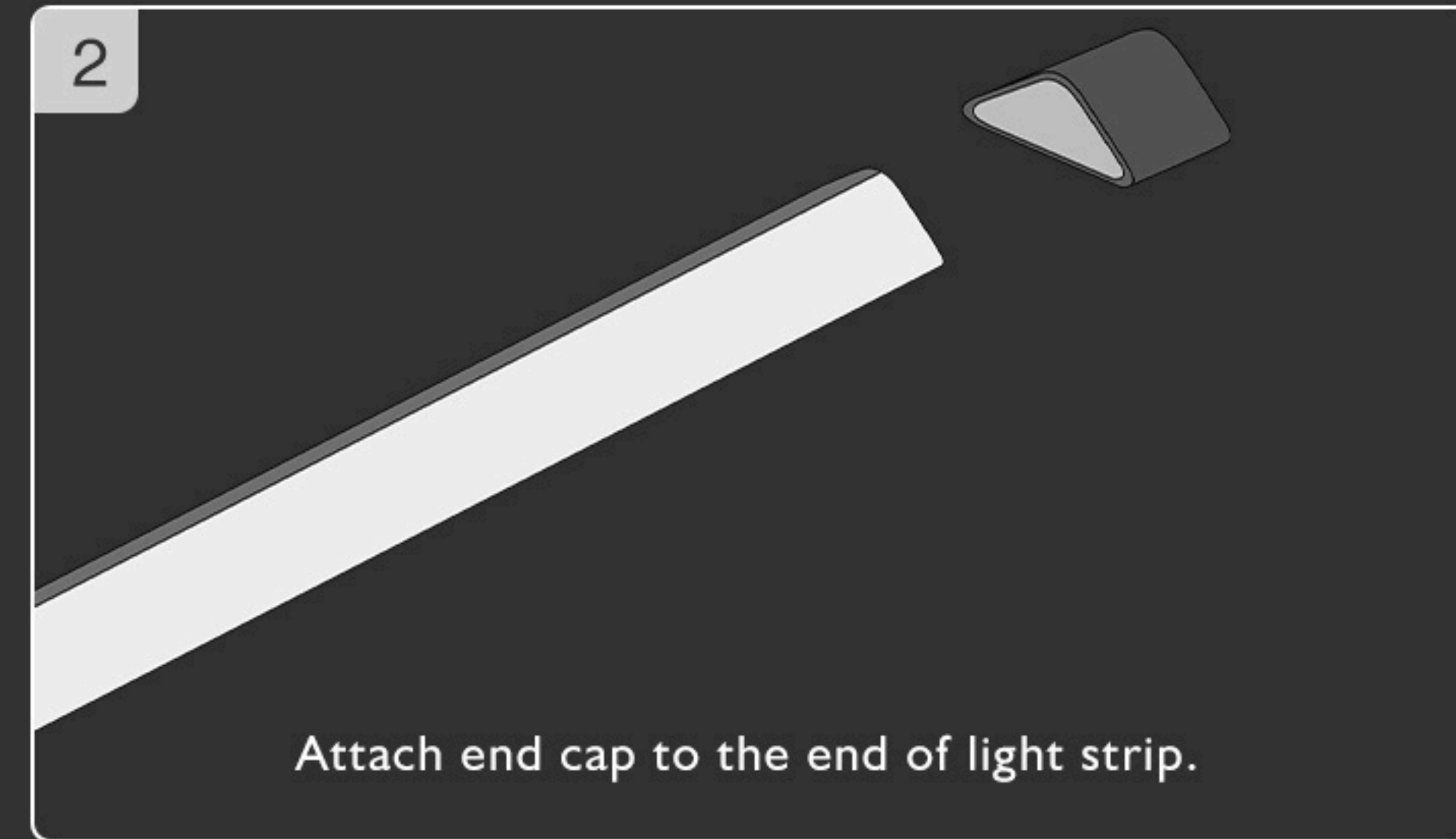
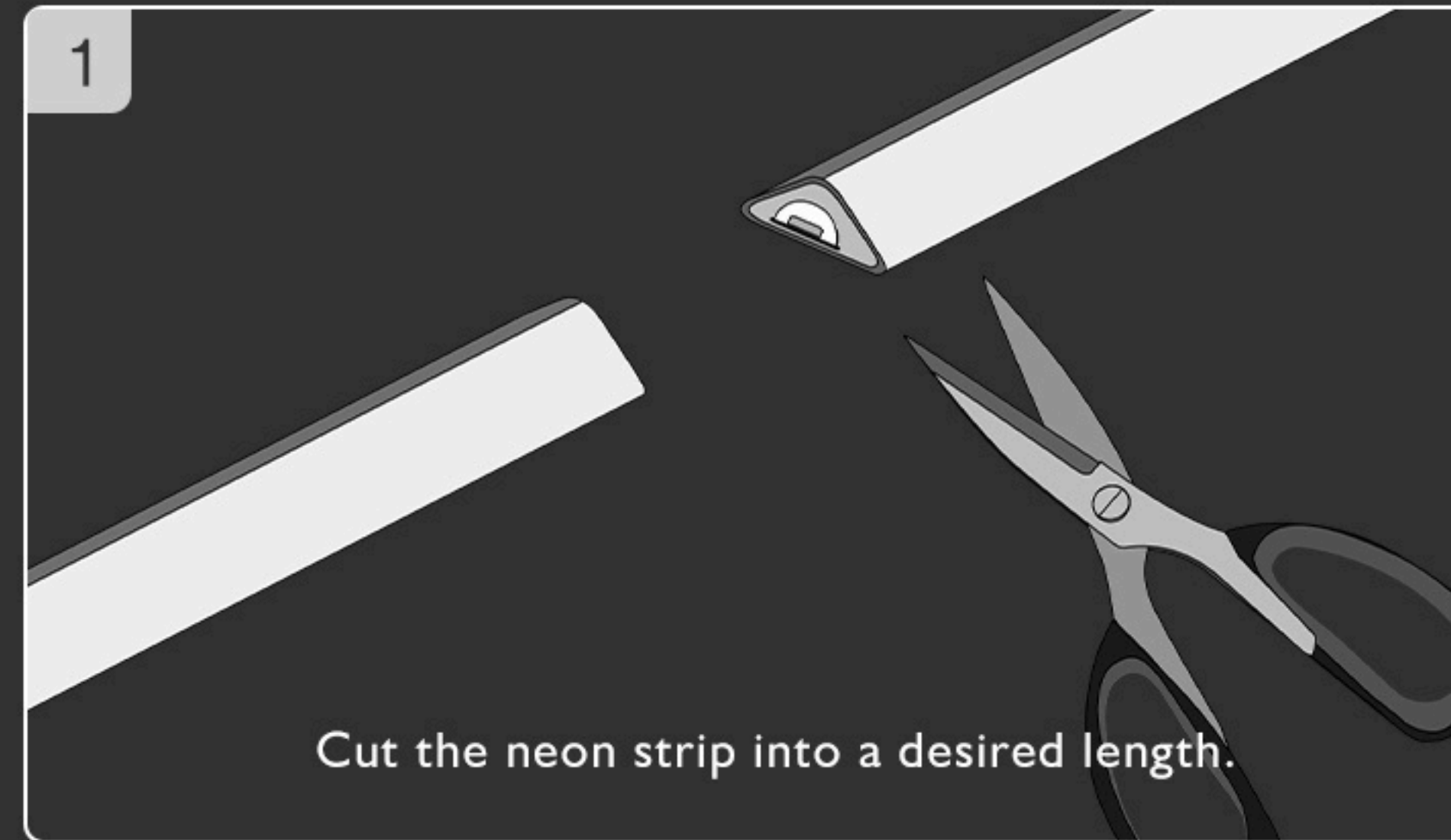


2 And place the luminescent surface facing the inside of the cabinet.

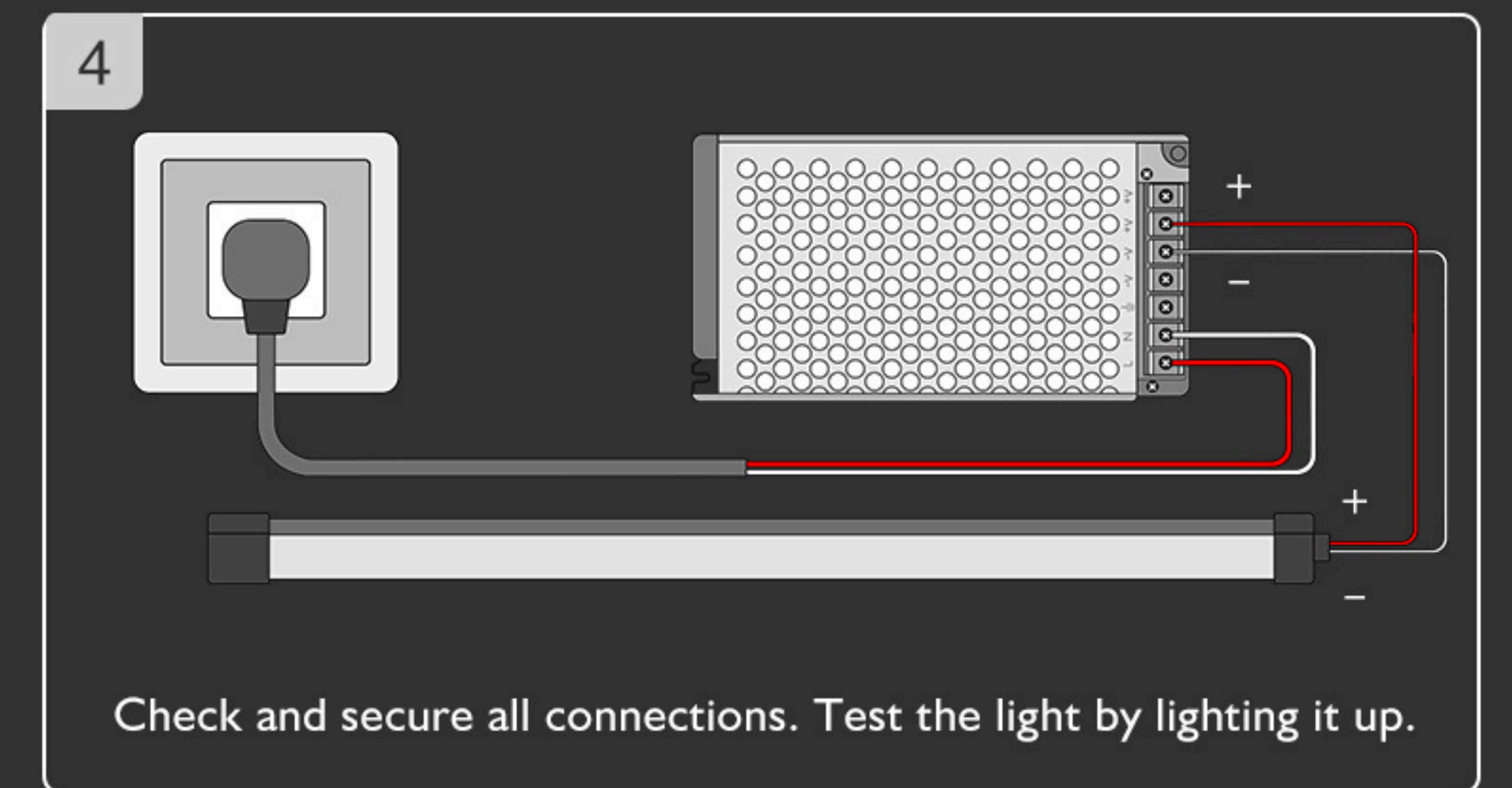
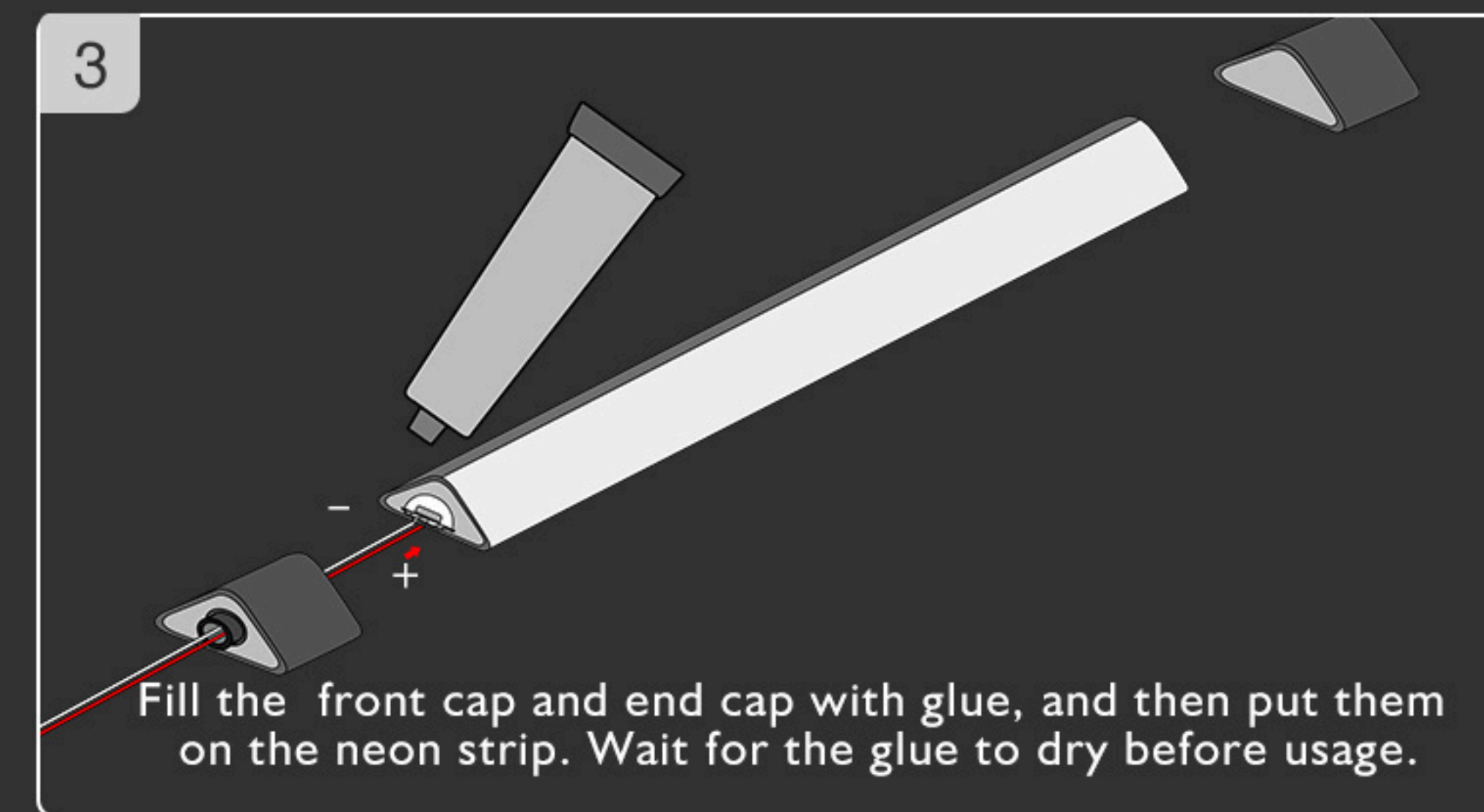
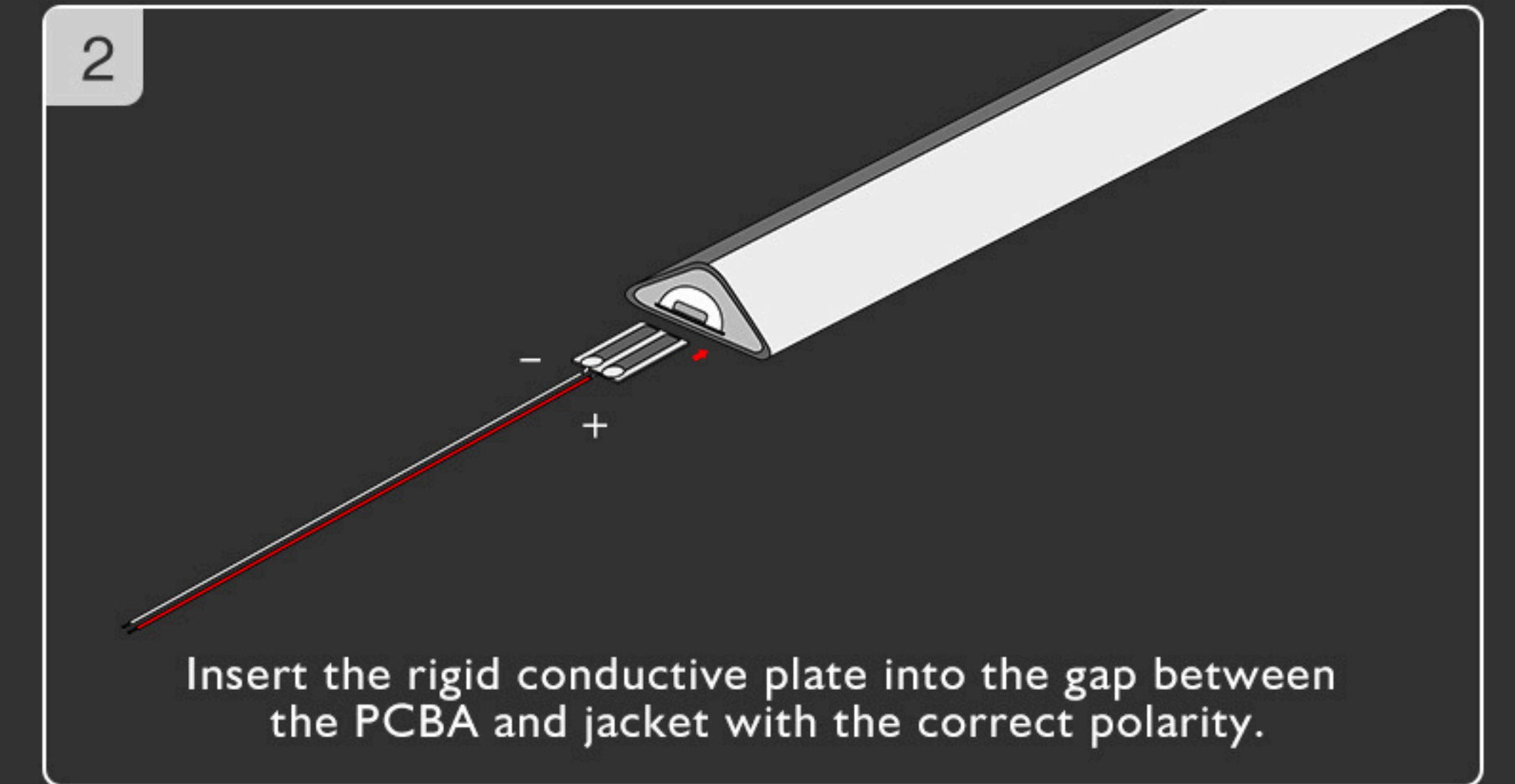
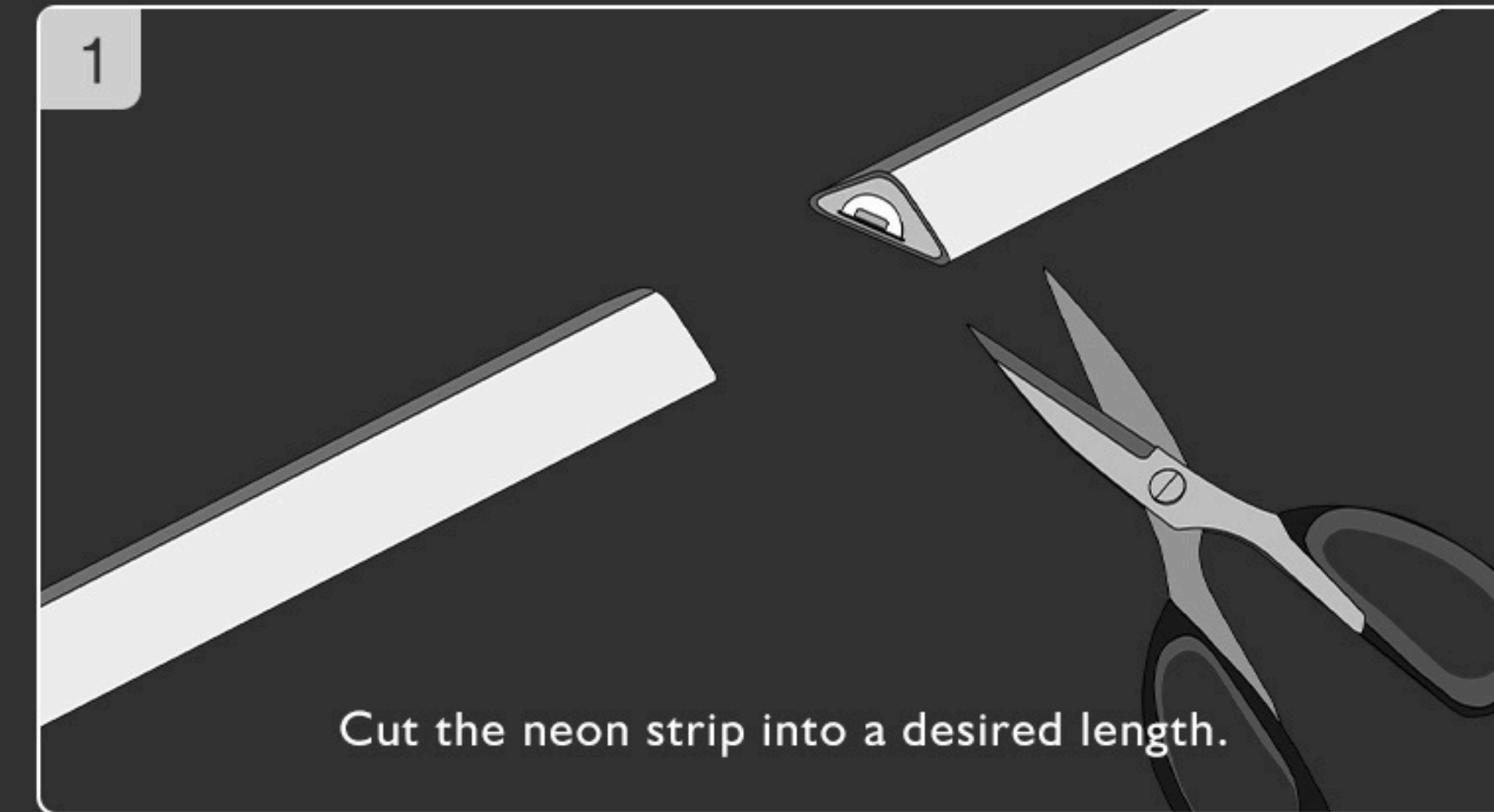


3 Attach the neon strip to the top of the cabinet.

Cutting Instruction



Powering Instruction



Splicing Instruction

