



- 160 degree angle lens that spreads light evenly for no hot spots
- Specially designed durable cover that withstands harsh environment and protects the LED
- High luminous efficacy guaranteed up to 160 lm/W (PRO3 HE)
- Easy installation with extra size cover of 3M tape and screw hole
- IP68 Waterproof and approved by UL, CE, RoHS
- Best LED solution for Channel Letter and Sign Box illumination
- Advanced performance with guaranteed even brightness
- 5 year limited warranty



DESCRIPTION

Lumens Depot Foam's PRO LED Modules are a premium lighting solution designed for professional applications. Built with Tier 1 LEDs, they deliver enhanced performance, reliability, and consistent illumination for demanding projects. Featuring an upgraded lens and durable wiring, these modules ensure maximum efficiency and long-term stability. The extended 3M tape backing allows for quick and easy installation, helping reduce labor time and overall costs. Engineered with advanced ultrasonic welding technology, they provide excellent waterproofing and protection against harsh environmental conditions, making them ideal for both indoor and outdoor signage and lighting applications.

SPECIFICATIONS

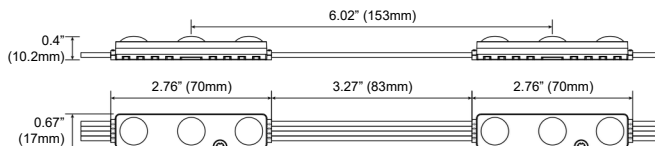
Colors	RGB Full Color
Lumens	25.92 lm/mod (51.84 lm/ft)
Efficacy	36 lm/W
Power	0.72 W/mod (1.44 W/ft)
Input Voltage	12V DC
Beam Angle	160°
Modules/ft	2 mods/ft
Dimensions	2.76" x 0.67" x 0.4"
Packaging	100 mods/bag (50 ft), 800 mods/carton (400 ft)
Max in series	40 mods
Operating Temp.	-4°F ~ 140°F / -20°C ~ 60°C
Warranty	5 year
IP Rating	IP68 Waterproof

COVERAGE CHART

Depth	3	4"	5"	6"~8"
Max Stroke Single Row	"	10	12"	14"
Max Stroke Multi Rows	8	"	12"	14"
Modules per ft	"	20 mods per ft		
Standard Run	6	" 50 mods		
Max Run	"	50 mods		

Parameters can be adjusted according to the desired brightness.

DIMENSIONS



INSTALLATION

⚠ Before you begin, determine your channel letter module mounting method. ⚠
READ THESE INSTRUCTIONS COMPLETELY AND CAREFULLY.

PREPARE ELECTRICAL WIRING

- Acceptable for use in dry, damp and wet locations.
- Follow all National Electric Codes (NEC) and local codes.
- This product is intended to be installed and serviced by a qualified, licensed electrician.
- Ensure applicable wire is installed between driver, fixture, and any controls in between.
- When choosing wire, factor in voltage drop, amperage rating, and type (in-wall rated, wet location rated, etc.).
- Inadequate wire installation could overheat wires, and cause a fire.
- Do not install if product has any visible damage.
- Do not modify or disassemble this product beyond instructions or the warranty will be void.

RISK OF ELECTRICAL SHOCK

- Turn power off before inspection, installation or removal.
- Properly ground power supply.

RISK OF FIRE

- Use only UL approved wire for input/output connections.
- Minimum wire size 18 AWG
- Follow all NEC and local codes.

SHOCK HAZARD. ⚡

- May result in serious injury or death.
- Turn off power at the circuit breaker before installing

TOOLS REQUIRED:



Tape Measure



Electric Drill



Wire Cutter



Wire Nut

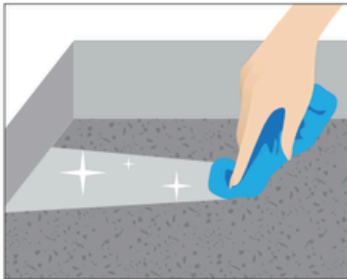


Electrical Tape

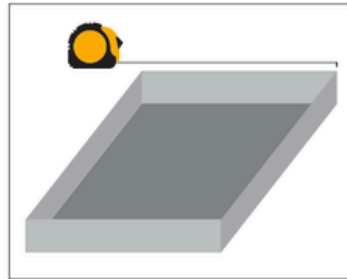


Silicone Gun

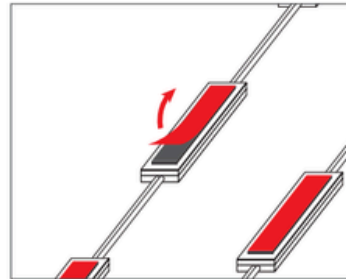
TOOLS REQUIRED:



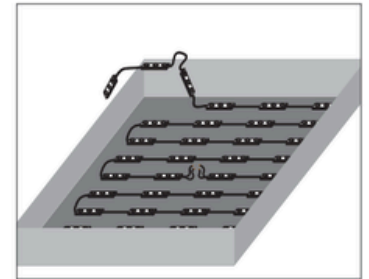
Cleaning without leaving dust.



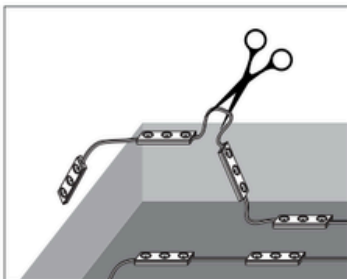
Measure and calculate for how many need LED module put in.



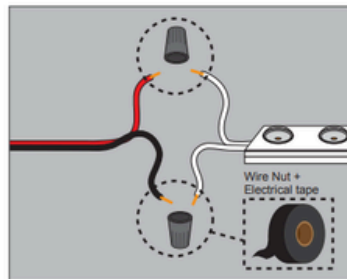
Remove tape cover.



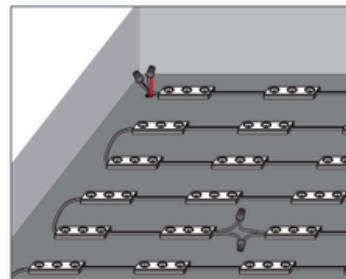
Stick LED modules into place.



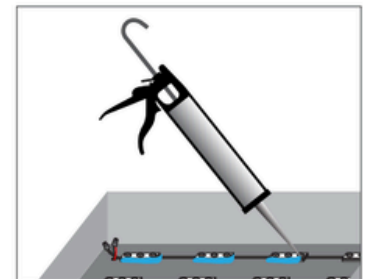
Cut the wire for connect DC power.



Connect DC power with wire nuts and electrical tape.



Last check before silicone.



Siliconing.