



- Ensures excellent transmittance and uniform lighting
- 160 degree angle lens that spreads light evenly for no hot spots
- Specially designed durable cover that withstands harsh environment and protects the LED
- High luminous efficacy guaranteed up to 160 lm/W
- Easy installation with extra size cover of 3M tape and screw hole
- IP68 Waterproof and approved by UL, CE, RoHS
- Best LED solution for Channel Letter and Sign Box illumination
- Advanced performance with guaranteed even brightness
- 5 year limited warranty



## DESCRIPTION

Lumens Depot Foam's PRO LED Modules are a premium lighting solution designed for professional-grade applications. Powered by high-quality Tier 1 LEDs, they deliver superior performance, efficiency, and consistent illumination. Featuring an enhanced lens and durable wiring, these modules are engineered for maximum reliability and long-term use. The extended 3M adhesive backing ensures quick and secure installation, helping reduce labor time and overall project costs.

## SPECIFICATIONS

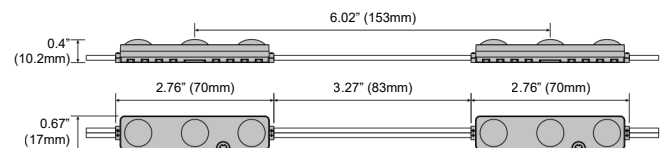
<b>Colors</b>	7000K	10000K
<b>Lumens</b>	176 lm/mod (352 lm/ft)	170.5 lm/mod (341 lm/ft)
<b>Efficacy</b>	160 lm/W	155 lm/W
<b>Power</b>	1.1 W/mod (2.2 W/ft)	
<b>Input Voltage</b>	12V DC	
<b>Beam Angle</b>	160°	
<b>Modules/ft</b>	2 mods/ft	
<b>Dimensions</b>	2.76" x 0.67" x 0.4"	
<b>Packaging</b>	120 mods/bag (60 ft), 1200 mods/carton (600 ft)	
<b>Max in series</b>	40 mods	
<b>Operating Temp.</b>	-4°F ~ 140°F / -20°C ~ 60°C	
<b>Warranty</b>	5 year	
<b>IP Rating</b>	IP68 Waterproof	

## COVERAGE CHART

<b>Depth</b>	5	6"	7"	8"-12"
<b>Max Stroke Single Row</b>	"	10	12"	14"
<b>Max Stroke Multi Rows</b>	8	"	12"	14"
<b>Modules per ft</b>	"	20 mods per ft		
<b>Standard Run</b>	6	"	40 mods	
<b>Max Run</b>	"	40 mods		

Parameters can be adjusted according to the desired brightness.

## DIMENSIONS



# INSTALLATION

**⚠ Before you begin, determine your channel letter module mounting method. ⚠**  
**READ THESE INSTRUCTIONS COMPLETELY AND CAREFULLY.**

## PREPARE ELECTRICAL WIRING

- Acceptable for use in dry, damp and wet locations.
- Follow all National Electric Codes (NEC) and local codes.
- This product is intended to be installed and serviced by a qualified, licensed electrician.
- Ensure applicable wire is installed between driver, fixture, and any controls in between.
- When choosing wire, factor in voltage drop, amperage rating, and type (in-wall rated, wet location rated, etc.).
- Inadequate wire installation could overheat wires, and cause a fire.
- Do not install if product has any visible damage.
- Do not modify or disassemble this product beyond instructions or the warranty will be void.

## RISK OF ELECTRICAL SHOCK

- Turn power off before inspection, installation or removal.
- Properly ground power supply.

## RISK OF FIRE

- Use only UL approved wire for input/output connections.
- Minimum wire size 18 AWG
- Follow all NEC and local codes.

## SHOCK HAZARD. ⚡

- May result in serious injury or death.
- Turn off power at the circuit breaker before installing

## TOOLS REQUIRED:



Tape Measure



Electric Drill



Wire Cutter



Wire Nut

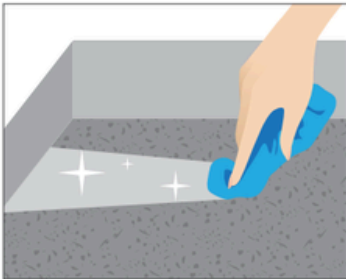


Electrical Tape

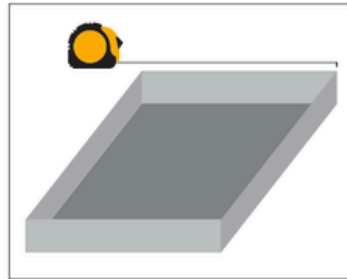


Silicone Gun

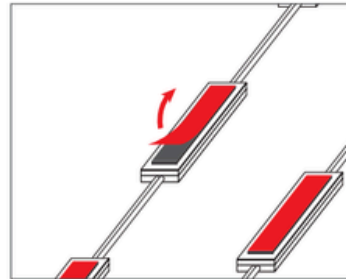
## TOOLS REQUIRED:



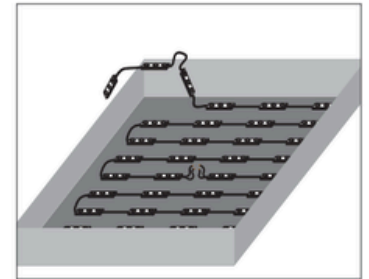
Cleaning without leaving dust.



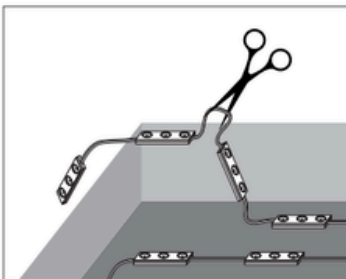
Measure and calculate for how many need LED module put in.



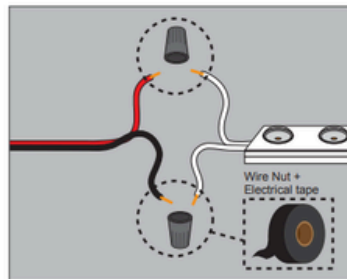
Remove tape cover.



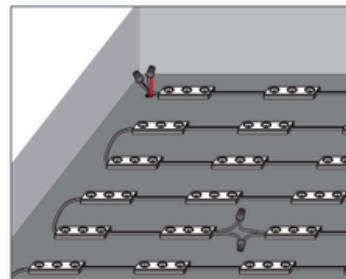
Stick LED modules into place.



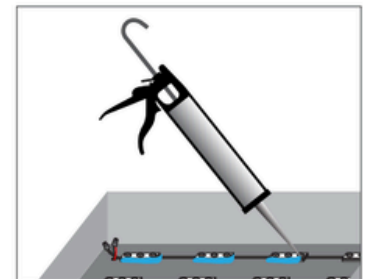
Cut the wire for connect DC power.



Connect DC power with wire nuts and electrical tape.



Last check before silicone.



Siliconing.