



- Ensures excellent transmittance and uniform lighting
- 160 degree angle lens that spreads light evenly for no hot spots
- Specially designed durable cover that withstands harsh environment and protects the LED
- High luminous efficacy guaranteed up to 100 lm/W
- Easy installation with extra size cover of 3M tape and screw hole
- IP68 Waterproof and approved by UL, CE, RoHS
- Best LED solution for Channel Letter and Sign Box illumination
- Advanced performance with guaranteed even brightness
- 5 year limited warranty



DESCRIPTION

Lumens Depot Foam's PRO LED Modules are a premium solution crafted for professional lighting applications. Powered by high-quality Tier 1 LEDs, they deliver exceptional performance, efficiency, and consistent illumination. Designed with an enhanced lens and durable wiring, these modules ensure reliable operation and long-lasting stability. The larger 3M adhesive backing enables quick and secure installation, helping reduce labor time and overall project costs.

SPECIFICATIONS

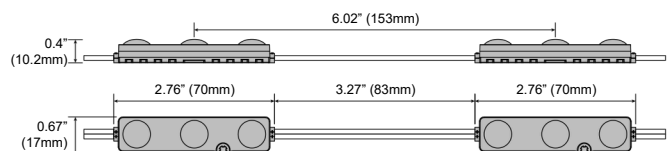
Colors	3000K	6500K	10000K
Lumens	110 lm/mod (220 lm/ft)		
Efficacy	100 lm/W		
Power	1.1 W/mod (2.2 W/ft)		
Input Voltage	12V DC		
Beam Angle	160°		
Modules/ft	2 mods/ft		
Dimensions	2.76" x 0.67" x 0.4"		
Packaging	100 mods/bag (50 ft), 1200 mods/carton (600 ft)		
Max in series	50 mods		
Operating Temp.	-4°F ~ 140°F / -20°C ~ 60°C		
Warranty	5 year		
IP Rating	IP68 Waterproof		

COVERAGE CHART

Depth	4	5"	6"	7"~10"
Max Stroke Single Row	"	10	12"	14"
Max Stroke Multi Rows	8	"	12"	14"
Modules per ft	"	2 mods per ft		
Standard Run	6	" 50 mods		
Max Run	"	50 mods		

Parameters can be adjusted according to the desired brightness.

DIMENSIONS





- Ensures excellent transmittance and uniform lighting
- 160 degree angle lens that spreads light evenly for no hot spots
- Specially designed durable cover that withstands harsh environment and protects the LED
- High luminous efficacy guaranteed up to 100 lm/W
- Easy installation with extra size cover of 3M tape and screw hole
- IP68 Waterproof and approved by UL, CE, RoHS
- Best LED solution for Channel Letter and Sign Box illumination
- Advanced performance with guaranteed even brightness
- 5 year limited warranty



DESCRIPTION

Lumens Depot Foam's PRO LED Modules are a premium lighting solution designed for professional applications. Powered by high-quality Tier 1 LEDs, they deliver superior brightness, efficiency, and consistent performance. With an enhanced lens and durable wiring, these modules are built for reliability and long-term use. The larger 3M adhesive backing ensures quick and secure installation, helping reduce labor time and overall project costs.

SPECIFICATIONS

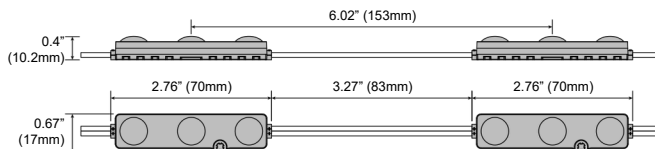
Colors	4000K	5000K
Lumens	110 lm/mod (220 lm/ft)	
Efficacy	100 lm/W	
Power	1.1 W/mod (2.2 W/ft)	
Input Voltage	12V DC	
Beam Angle	160°	
Modules/ft	2 mods/ft	
Dimensions	2.76" x 0.67" x 0.4"	
Packaging	100 mods/bag (50 ft), 1200 mods/carton (600 ft)	
Max in series	50 mods	
Operating Temp.	-4°F ~ 140°F / -20°C ~ 60°C	
Warranty	5 year	
IP Rating	IP68 Waterproof	

COVERAGE CHART

Depth	4	5"	6"	7"~10"
Max Stroke Single Row	"	10	12"	14"
Max Stroke Multi Rows	8	"	12"	14"
Modules per ft	"	102 mods per ft		
Standard Run	6	"	50 mods	
Max Run	"	50 mods		

Parameters can be adjusted according to the desired brightness.

DIMENSIONS



INSTALLATION

⚠ Before you begin, determine your channel letter module mounting method. ⚠
READ THESE INSTRUCTIONS COMPLETELY AND CAREFULLY.

PREPARE ELECTRICAL WIRING

- Acceptable for use in dry, damp and wet locations.
- Follow all National Electric Codes (NEC) and local codes.
- This product is intended to be installed and serviced by a qualified, licensed electrician.
- Ensure applicable wire is installed between driver, fixture, and any controls in between.
- When choosing wire, factor in voltage drop, amperage rating, and type (in-wall rated, wet location rated, etc.).
- Inadequate wire installation could overheat wires, and cause a fire.
- Do not install if product has any visible damage.
- Do not modify or disassemble this product beyond instructions or the warranty will be void.

RISK OF ELECTRICAL SHOCK

- Turn power off before inspection, installation or removal.
- Properly ground power supply.

RISK OF FIRE

- Use only UL approved wire for input/output connections.
- Minimum wire size 18 AWG
- Follow all NEC and local codes.

SHOCK HAZARD. ⚡

- May result in serious injury or death.
- Turn off power at the circuit breaker before installing

TOOLS REQUIRED:



Tape Measure



Electric Drill



Wire Cutter



Wire Nut

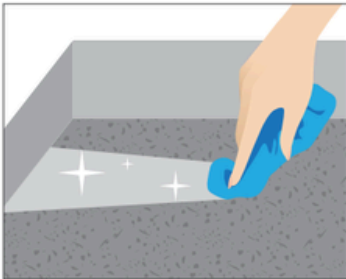


Electrical Tape

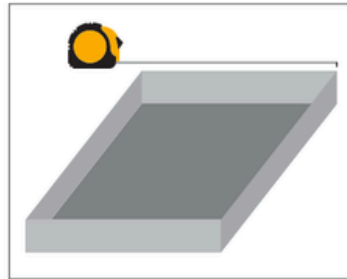


Silicone Gun

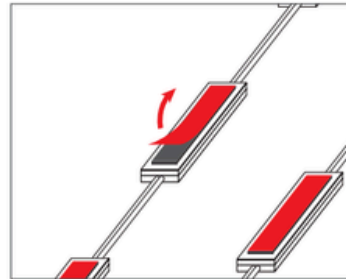
TOOLS REQUIRED:



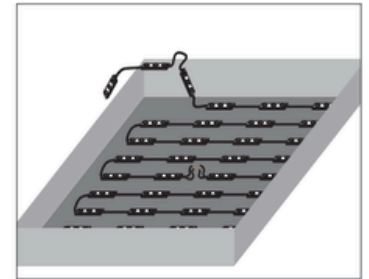
Cleaning without leaving dust.



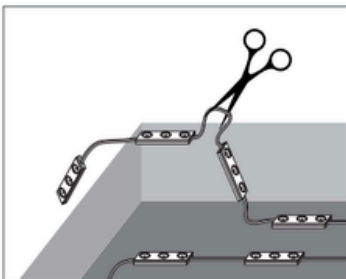
Measure and calculate for how many need LED module put in.



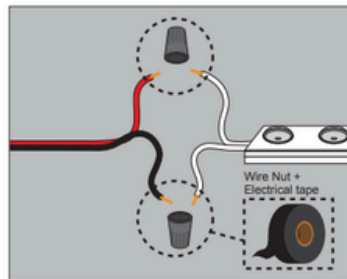
Remove tape cover.



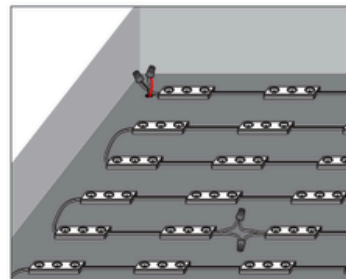
Stick LED modules into place.



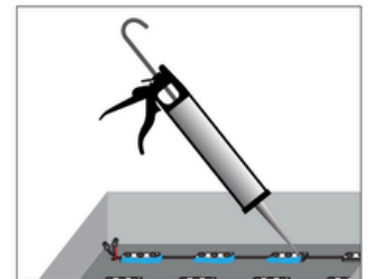
Cut the wire for connect DC power.



Connect DC power with wire nuts and electrical tape.



Last check before silicone.



Siliconing.