



FEATURES

- Ensures excellent brightness and uniform lighting
- Suitable for minimum 3" depth cabinet signs
- Recommend 0.65ft ~ 4ft for double sides / 0.65ft ~ 1.6ft for single side
- Specially designed durable lens that withstands harsh environment and protects the LED
- Easy installation with double sided 3M tape and screw holes
- IP65 Waterproof and approved by UL, CE, RoHS
- 3 year limited warranty

DESCRIPTION

Lumens Depot Foam's ECO Series LED Modules are specifically designed for channel letter signage, offering a cost-effective and reliable lighting solution. Powered by high-quality LEDs, they deliver strong performance and durability suitable for long-term use. Engineered as an economical option, these modules provide efficient illumination while maintaining ease of installation with double-sided 3M adhesive backing. This allows for quick setup and reduced labor effort.

SPECIFICATIONS

Colors	6800K	Modules/ft	2 mods/ft
Lumens	135 lm/mod (270 lm/ft)	Dimensions	2.5" x 0.9" x 0.38"
Efficacy	90 lm/W	Packaging	40 mods/bag (20 ft), 800 mods/carton (400 ft)
Power	1.5 W/mod (3 W/ft)	Max in series	20 mods
Input Voltage	12V DC	Operating Temp.	-4°F ~ 122°F / -20°C ~ 50°C
Beam Angle	20° x 30°	Warranty	3 year
		IP Rating	IP65 Waterproof

DIMENSIONS



SAMPLE TEST

FABERIC	FABERIC METHOD	Lighting Distance (m)	Light Box Depth H (cm)	Illumination (LUX)	Density mods x m	Power W/m ²
White sofe film	2 Sides	0.6	10	1553-1684	12 x 2	60
		0.8	10	1431-1165	12 x 2	45
		1	10	886-1252	12 x 2	36

INSTALLATION

⚠ Before you begin, determine your channel letter module mounting method. ⚠
READ THESE INSTRUCTIONS COMPLETELY AND CAREFULLY.

PREPARE ELECTRICAL WIRING

- Acceptable for use in dry, damp and wet locations.
- Follow all National Electric Codes (NEC) and local codes.
- This product is intended to be installed and serviced by a qualified, licensed electrician.
- Ensure applicable wire is installed between driver, fixture, and any controls in between.
- When choosing wire, factor in voltage drop, amperage rating, and type (in-wall rated, wet location rated, etc.).
- Inadequate wire installation could overheat wires, and cause a fire.
- Do not install if product has any visible damage.
- Do not modify or disassemble this product beyond instructions or the warranty will be void.

RISK OF ELECTRICAL SHOCK

- Turn power off before inspection, installation or removal.
- Properly ground power supply.

RISK OF FIRE

- Use only UL approved wire for input/output connections.
- Minimum wire size 18 AWG
- Follow all NEC and local codes.

SHOCK HAZARD. ⚡

- May result in serious injury or death.
- Turn off power at the circuit breaker before installing

TOOLS REQUIRED:



Tape Measure



Electric Drill



Wire Cutter



Wire Nut

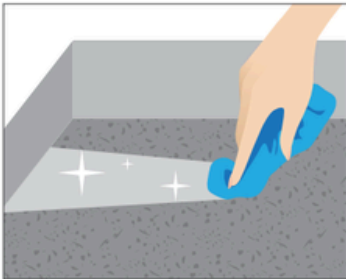


Electrical Tape

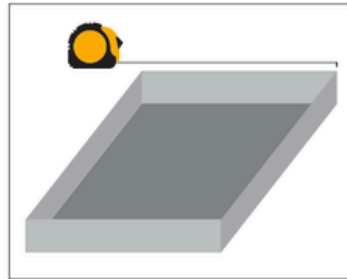


Silicone Gun

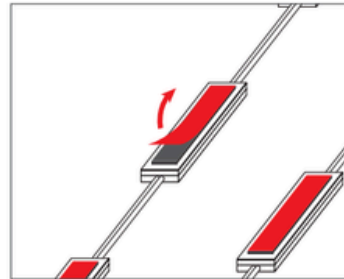
TOOLS REQUIRED:



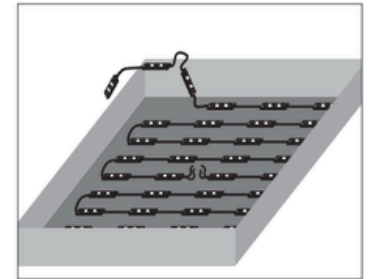
Cleaning without leaving dust.



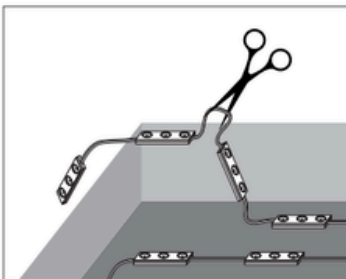
Measure and calculate for how many need LED module put in.



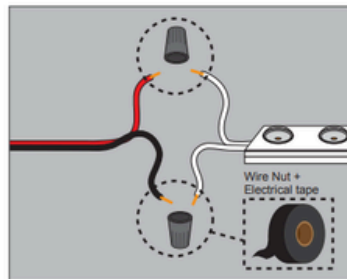
Remove tape cover.



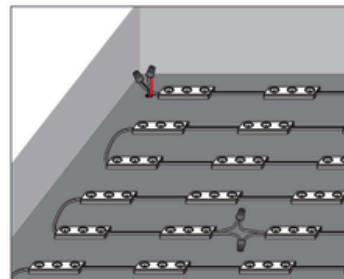
Stick LED modules into place.



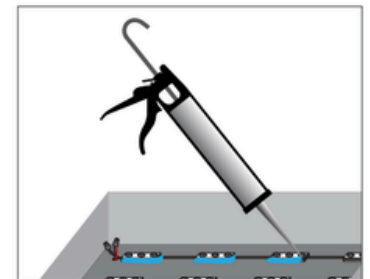
Cut the wire for connect DC power.



Connect DC power with wire nuts and electrical tape.



Last check before silicone.



Siliconing.