

EMERGENCY EXIT SIGN



Lumens Depot Foam's LED Dual Exit Sign with Emergency Lights is a reliable and energy-efficient solution designed for commercial and institutional environments requiring adaptable emergency egress signage. Featuring field-selectable red and green EXIT illumination, it offers flexibility to meet various building codes and design preferences.

This versatile unit includes a snap-fit faceplate for quick and easy installation, along with dual adjustable LED heads that provide effective path lighting during emergencies. It supports universal mounting options for both ceiling and wall applications, ensuring convenient setup across different spaces.

Equipped with a long-lasting, maintenance-free battery, it delivers up to 90 minutes of emergency runtime, meeting essential safety standards. Built for dependability and performance, it is an ideal choice for ensuring safe and efficient evacuation in critical situations.

Product Features

- Wattage 2 x 2W
- CCT 5000K
- Diffuse type Red & Green
- Input Volt: 120-277V / 50-60Hz
- Low energy consumption (2W)
- Output Power: 24H
- Charging Time 24 hrs
- Discharging Time: 90 minutes
- Snap-fit faceplate design
- Ceiling mount and Wall mount
- Red & Green Switchable Dual Exit Sign
- Universal single face and double face
- Maintenance-free nickel-metal hydride battery
- Two adjustable, glare-free LED round lighting heads
- UL Listed
- 2 Year Warranty

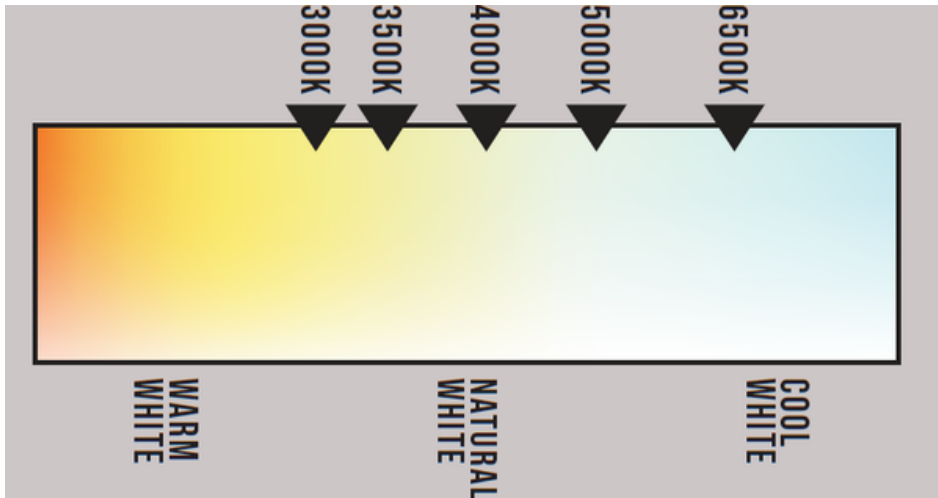
EMERGENCY EXIT SIGN

Specifications

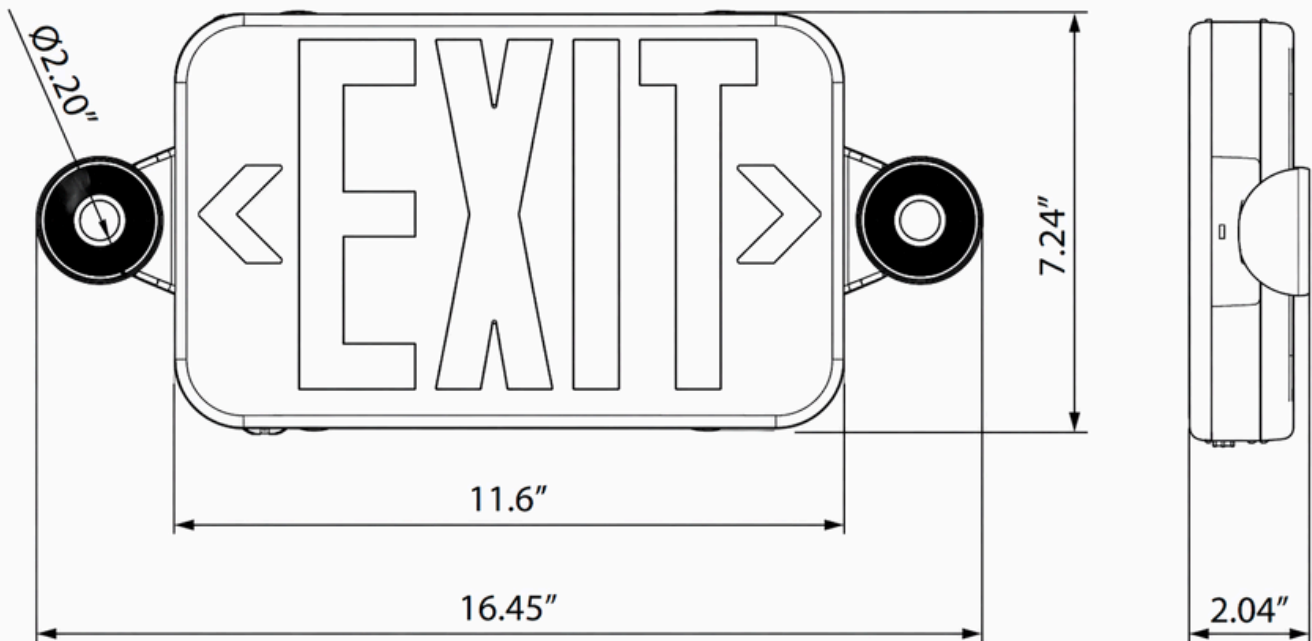
Parameter	Description	Value	
General Performance	Model #.	AST-EMEX01-2WA1-WHRS50S	
	Watt	2 x 2W	
	Color Temperature (With two side lamp)	5000K	
	CRI (With two side lamp)	>80	
	Lumen (With two side lamp)	≥135Lm	
	Input Voltage	120-277VAC	
	Frequency	50/60Hz	
	Battery Type	NI-MH battery	
	Battery Capacity	3.6V,1000mAH	
	Charging Time	≤24 Hours	
	Emergency Discharging Time	≥90 minutes	
	Pilot lamp status	ON: Charging	
		OFF: Charged and working normally	
Physical	Flicker: Lamp malfunction		
	Operating Temperature	0°C TO 50°C	
	Operating Humidity	10%-90% RH	
	Storage Temperature	-20°C TO 80°C	
	Storage Humidity	10%-95% RH	
	LED Brand	Lumileds	
	LED Type	2835	
	LED QTY	2 PCS	
Construction	PC+ABS		
Other	Housing color	White	
	IP Rating DRY	IP20	
	Warranty Time	2 Year Warranty	

EMERGENCY EXIT SIGN

Correlated Color Temperature (CCT)



Dimensions



EMERGENCY EXIT SIGN

Installation

When using electrical equipment, always adhere to basic safety precautions including the following:

IMPORTANT

- The battery in this unit may not be fully charged. After electricity is connected to unit, let battery charge for at least 24 hours, then normal operation of this unit should take effect.
- The equipment (battery) should be charged for 24 hours. When the equipment has been stored for more than 6 months without installation or use,
- To check, press TEST button. The emergency LED lamps should illuminate.
- When re-lamping, use only LED lamps specified in the literature. Using other lamp types may result in transformer damage or unsafe conditions.

READ AND FOLLOW ALL SAFETY INSTRUCTIONS

1. Do not use outdoors.
2. Equipment should be mounted securely in locations and at heights where it will not be readily subjected to tampering by unauthorized personnel.
3. Do not mount near gas or electric heaters.
4. Cap unused wires with enclosed wire nuts or other approved method.
5. Do not use this equipment for anything other than its intended use.
6. The use of accessory equipment not recommended by the manufacturer will void product listing and warranty and may cause an unsafe condition.
7. Disconnect AC power before servicing and installation.
8. Consult local building code for approved wiring and installation.
9. Use caution when servicing batteries.
10. Any service on this equipment should be performed by qualified personnel only.
11. Make sure wire terminations are secure and leads are properly tucked in appropriate wire channels.
12. If acid is spilled on skin or eyes, flush acid with fresh water and contact a physician immediately.
13. Models "AST-EMEX01-2WA1-abSde" shall be marked "Max mounting height: 19.6ft (6m)"

INSTALLATION (CEILING MOUNT)

1. Remove faceplate and set aside.
2. Connect 20-inch jumper leads slide through the canopy to AC input leads in J-box. Use red wire for 120-277V. White wire is common.
3. Fasten canopy to ceiling.
4. Remove canopy hole cover on the top and snap housing to canopy.
5. Connect and trim input leads and slide through the canopy and connect to supply leads in the J-box
6. Connect battery only after continuous. AC power can be provided to the unit.
7. Remove proper chevron(s) as required.
8. Secure face plate(s) to housing.

EMERGENCY EXIT SIGN

Installation

OPERATION

1. Apply AC power to the unit. The LED indicator should turn RED.
2. After the battery has been left to charge for 24 hours, test the unit by pushing the switch. The LED indicator turns OFF and the LED board stays ON.
3. When the switch is released, the LEDs turns OFF and LED indicator turns back to RED.

MAINTENANCE

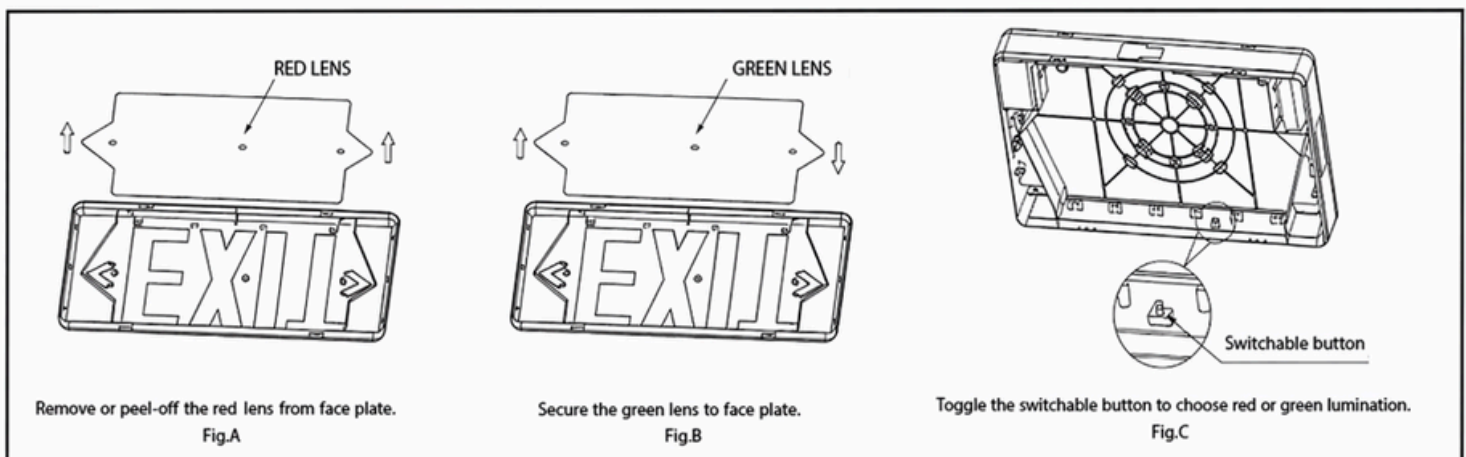
Caution: Always turn o AC power to the equipment before servicing. Servicing should be performed only by quali ed service technician. Use only MANUFACTURE supplied replacement parts.

BATTERY

The battery with the Battery Backup model requires no maintenance. However, it should be periodically (see TESTING) and replaced when it no loner operates the connected xtures for the duration of a 30-second or 90 minutes test. The battery supplied in this equipment has alife expectancy of 5 years when used in a normal temperature of 72F.

TESTING

National Electric Code (NEC) and NFPA life safety code regulations require that routine tests need to be performed as listed below: Once every month, the unit needs to be tested for duration 30 seconds. Push in and hold the test switch to perform this test Once every 12 months, a full 90 minutes (per UL requirements) test needs to be performed on the unit. Disconnect power to the unit and leave it in the emergency mode. The LEDs should stay ON for at least 90 minutes.



EMERGENCY EXIT SIGN

Notice For User

- Please turn o power before install or change assembly parts.
- The input voltage and luminaires should be matched, after connecting the power line, Please make sure the wiring section is insulated.
- No-professionals, must not install and disassemble the luminaires.
- Do not use the xture when the environment temperature is above 50°C or below 0°C,or it will cause rapid attenuation of the battery and a ect the battery's lifetime, even damage it.
- Do not use non-standard installation accessories to install the xture, any accident caused will be born by the operator.
- The lamp is stored for 6 months without use. Please charge the lamp for 24 hours, otherwise it will seriously a ect the battery life.

Trouble Shooting s

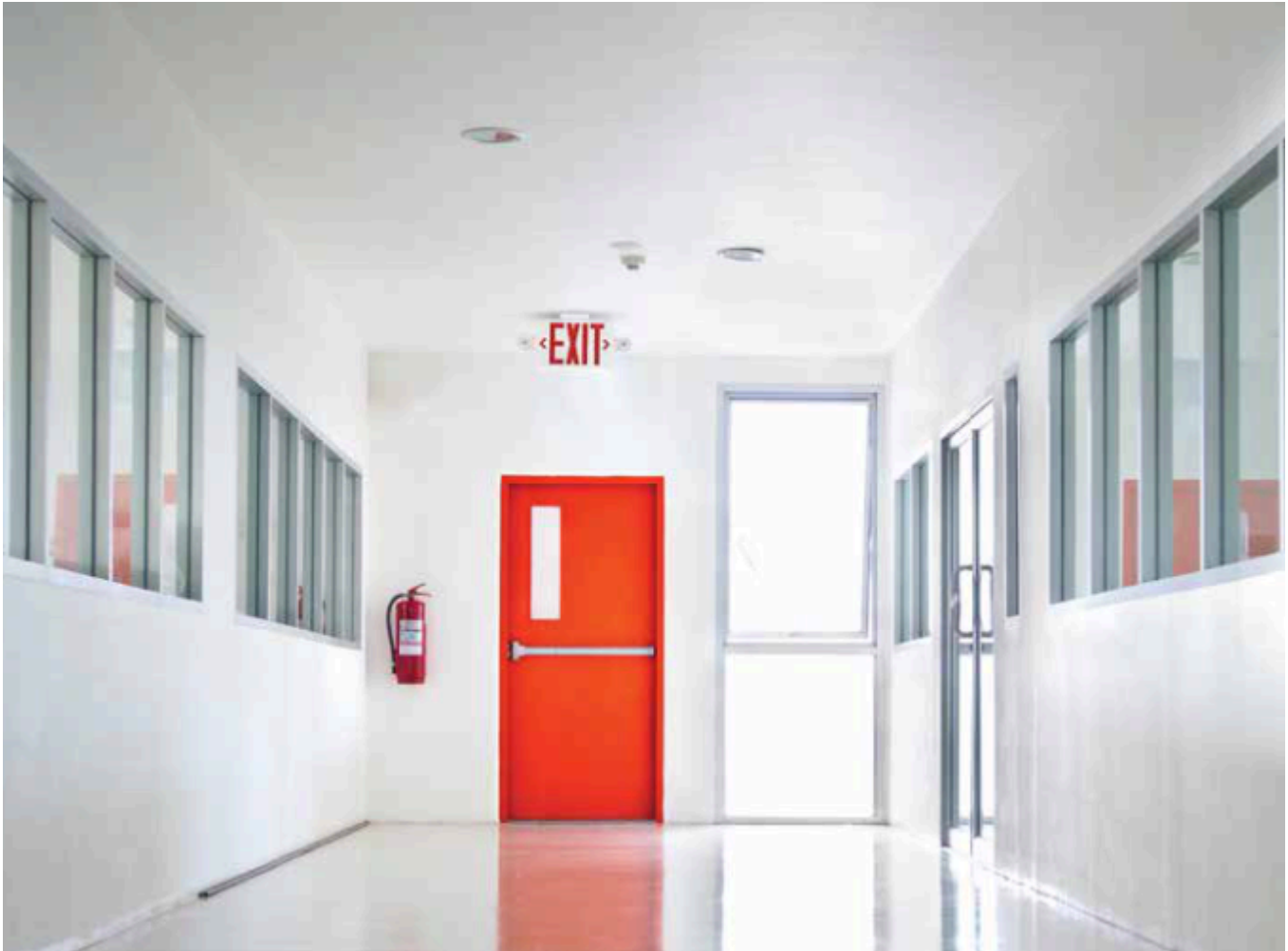
Trouble	Check Points
Flickering of indicator light	Turn o the power and check battery connections. If same phenomena occur, then call agencies.
Out of working	Please check the connection.

Packaging

Box Type	Box Dimension	Qty	Net Weight	Gross Weight
Outer Box	28.1" x 17.1" x 15.8"	20 Pcs/Box	2.15 LBS	5.39LBS

EMERGENCY EXIT SIGN

Application Picture



EMERGENCY EXIT SIGN

Application Picture

