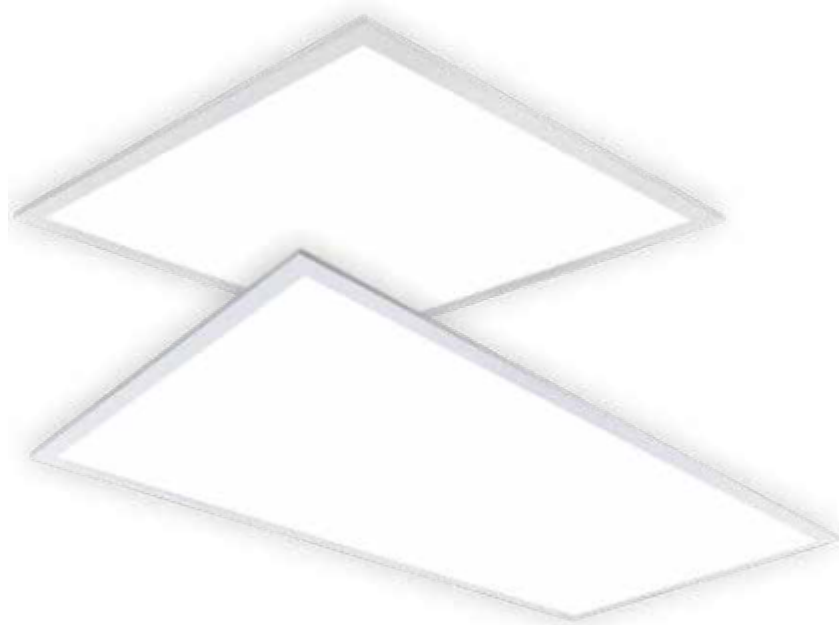


BACKLIT PANEL LIGHT



Beyond LED Technology's ECOPANEL LED Backlit Panels offer exceptional value with ultra-thin, super-bright performance and uniform illumination, all while being one of the most economical options available. These panels provide outstanding energy efficiency and offer adjustable wattage and CCT options, allowing for maximum flexibility to meet the lighting needs of any environment at a low price point. Designed with a sleek backlit design, the ECOPANEL provides soft, ambient lighting that enhances the atmosphere of any space. The slim profile and advanced LED technology make the ECOPANEL the ideal choice for both renovations and new construction projects. Whether installed in commercial buildings, offices, hospitals, libraries, hotels, or corridors, these panels deliver high-quality and affordable performance. Featuring a PS lens for uniform, glare-free lighting, the ECOPANEL ensures a comfortable and economical lighting experience. It can be recessed, suspended, or surface-mounted, offering versatile installation options.

Product Features

- Up to 125 lm/W
- Available in 2x2 & 2x4
- Adjustable wattage
- Adjustable CCT
- 0-10V Dimmable
- 120° Beam Angle
- White housing
- Input Voltage 100-277VAC
- ETL & DLC listed
- 5-year warranty

BACKLIT PANEL LIGHT

ADJ. WATT	MAX LUMENS	ADJ. CCT	INPUT VOLTAGE	CRI	SIZE	LIGHT SPREAD	CONSTRUCTION	DIMMING	CERTIFICATIONS
20W/25W/30W/ 35W/40W	5000	3K/3500K/4K 5K/6500K	100-277V	>80	2X2	120°	Aluminum+PC	0-10V	ETL & DLC
30W/40W/50W/ 60W/72W	9000	3K/3500K/4K 5K/6500K	100-277V	>80	2X4	120°	Aluminum+PC	0-10V	ETL & DLC

Specifications

Parameter	Description	Value
General Performance	Model #	BLT-BL22-S72-3065
	Adjustable Watt	30W/40W/50W/60W/72W
	Max Lumens	9000
	Lumen Efficacy	Up to 125LM/W
	Color Temperature	3000K / 3500K / 4000K / 5000K / 6500K
	CRI (Ra)	>80
	Light Spread	120o
	Diffuser Type	PS Cover
Electrical	Input Voltage	100-277Vac
	Frequency	50/60Hz
	THD	<10%
	Dimming	0-10V Dimmable
	Power Factor	≥0.95
	Flicker Free	Yes
Physical	Driver Model	N/M
	Operating Temperature	-20°C ~+35°C
	Operating Humidity	20% - 75%
	Storage Humidity	N/A
	LED Brand	Everfine
	LED Type	SMD2835
	LED QTY	90x2
Construction	Metal Housing + PS Cover	
Qualification	Housing Color	White
	IP Rating	IP20
	Warranty	5 Year warranty

BACKLIT PANEL LIGHT

Specifications

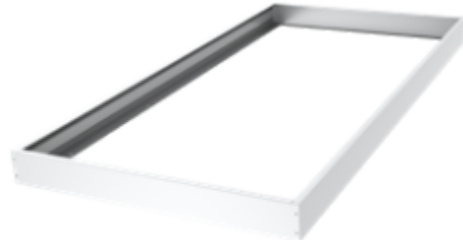
Parameter	Description	Value
General Performance	Model #	BLT-BL24-S72-3065
	Adjustable Watt	30W/40W/50W/60W/72W
	Max Lumens	9000
	Lumen Efficacy	Up to 125LM/W
	Color Temperature	3000K / 3500K / 4000K / 5000K / 6500K
	CRI (Ra)	>80
	Light Spread	120o
	Diffuser Type	PS Cover
Electrical	Input Voltage	100-277Vac
	Frequency	50/60Hz
	THD	<10%
	Dimming	0-10V Dimmable
	Power Factor	≥0.95
	Flicker Free	Yes
Physical	Driver Model	N/M
	Operating Temperature	-20°C ~+35°C
	Operating Humidity	20% - 75%
	Storage Humidity	N/A
	LED Brand	Everfine
	LED Type	SMD2835
	LED QTY	90x2
	Construction	Metal Housing + PS Cover
Qualification	Housing Color	White
	IP Rating	IP20
	Warranty	5 Year warranty

BACKLIT PANEL LIGHT

Optional Accessories



Surface Mounting Kit / 2
x 2



Surface Mounting Kit / 2 x
4



Suspension Kit



Optional
Emergency Driver

Backlit Panel



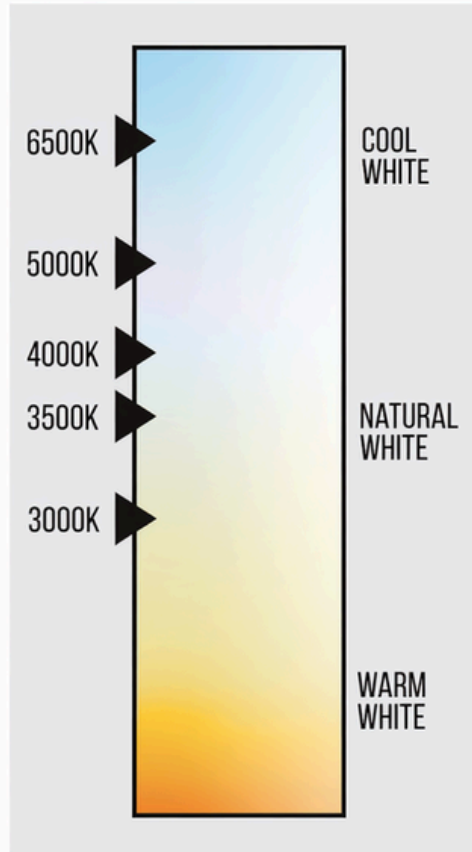
2 x 2



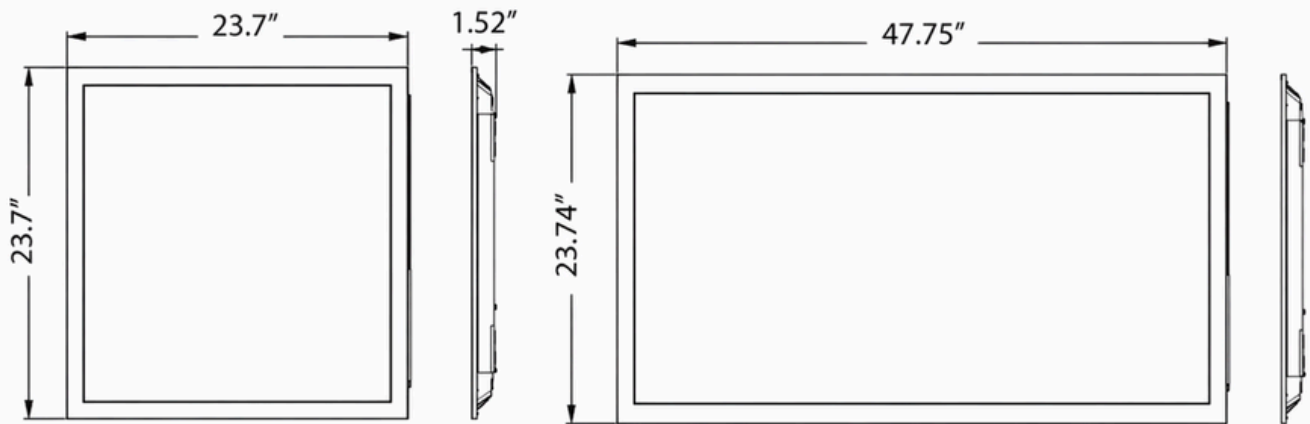
2 x 4

BACKLIT PANEL LIGHT

Correlated Color Temperature (CCT)

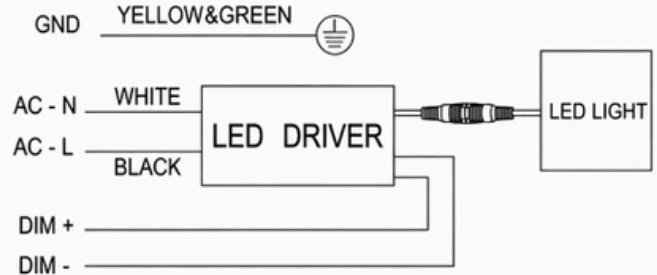
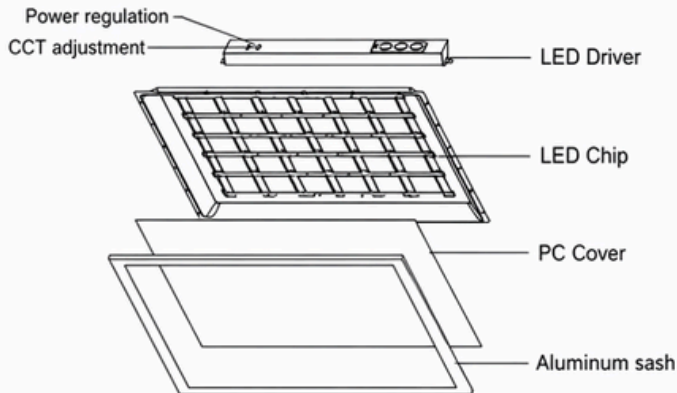


Dimensions

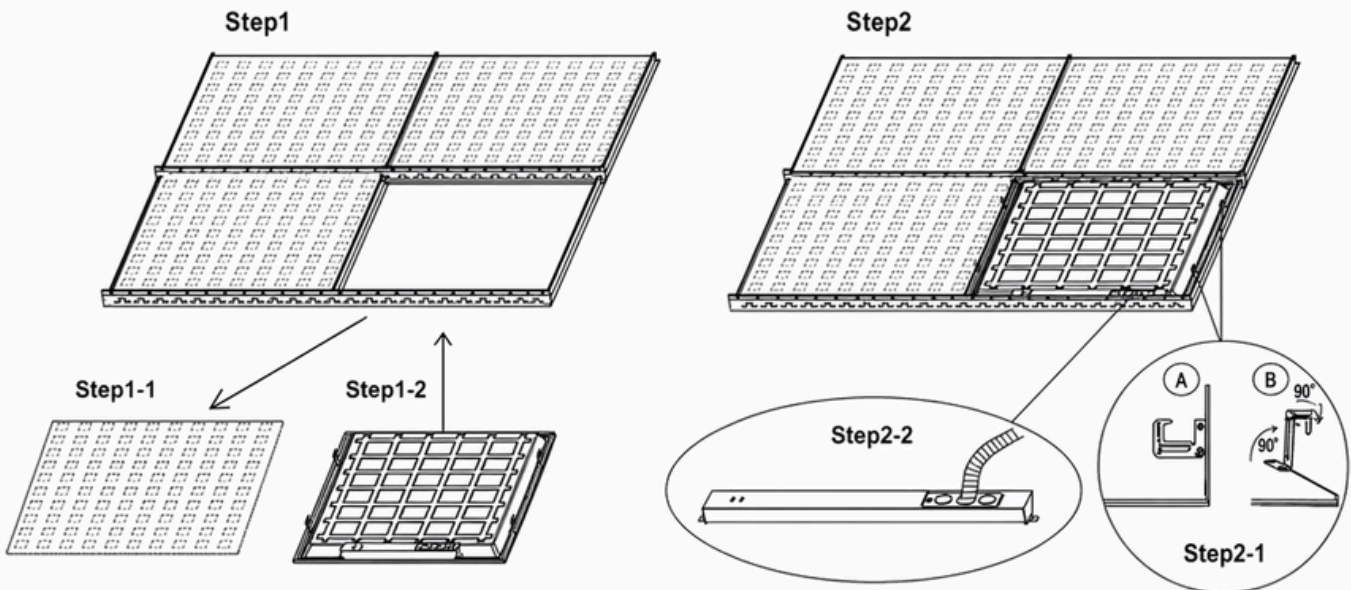


BACKLIT PANEL LIGHT

Installation



INSTALLATION INSTRUCTION



Step 1: Make sure of all the power is off before installing. Remove the one ceiling tile that you need to install light fixture on. Then place the light fixture on the T-bar carefully and make sure it is correctly in place and secure.

Step 2: Lift the 4 buckles on the back of the panel up by 90° then bend the top part of the buckles 90° towards the direction where you can anchor the light fixture to the T-bar.

Step 3: Place the driver on top of the lighting fixture in the back. Connect the cable between the driver and the lighting fixture. Open the driver's junction box and connect the AC wire to the driver correctly (L=black & N=white)

Warning:

Make sure all the power is off before installation.

All the installations are required to be done by professionals.

BACKLIT PANEL LIGHT

Packaging

Size	Box Dimension	Qty	Net Weight	Gross Weight
2 x 4	49.6" x 6.10" x25.6"	4 Pcs/Box	35.3LBS	39.7LBS

Application

